



CITY OF CHANDLER, ARIZONA

TRAFFIC SIGNAL AT LAYTON LAKES BOULEVARD AND QUEEN CREEK ROAD

Project No. DS2202.401

ADDENDUM NO. 1

Date: November 1, 2024

1. Bidder must acknowledge the receipt of this addendum on the Proposal Acknowledgement page of the **BID SUBMITTAL**. This addendum, containing **5 pages**, is hereby incorporated into the Construction Agreement by this reference.

2. **Question:** Currently the solicitation and bidding documents state the project must be completed within (120) consecutive calendar days from the Notice to Proceed. Can the City increase the Contract time to account for long lead materials. Currently traffic signal poles are being quoted 18 to 22 weeks after release of materials. This does not included time released to the material submittal process.
Response: The city is open to issuing a **limited** notice to proceed (NTP) to procure long-lead items. The contract duration will not commence until the official NTP is issued.

3. **Question:** The advertisement states that this project must be completed within 120 calendar days, however, the lead time on meter pedestals and signal poles will be well over that. Right now meter pedestals are taking up to 40 weeks after approved submittals and signal poles are 4 weeks to get shop drawings + 2 weeks for submittal approvals + 22-26 weeks for pole fabrication and delivery. The duration to receive materials is up to 280 calendar days and then the contractor needs 6-8 weeks to build the job. That 6-8 week duration does not include the time frame for SRP's crews to heat up the meter pedestal. With all of that considered, will the City issue a delayed NTP after award to account for the material lead times?
Response: The city is open to issuing a **limited** notice to proceed (NTP) to procure long-lead items. The contract duration will not commence until the official NTP is issued.

4. **Question:** The current bid schedule shows Item 66 - SRP Design & Construction Cost (1) LS. There does not appear to be an item scope in the Technical Specifications or SRP plan sheets included in the project plans. Please clarify what is required for this item.
Response: The SRP plans have been attached to this addendum – **See Exhibit A.** (3 Pages)

If you have any questions, please email Bid.Questions@chandleraz.gov.

Daniel Haskins

Daniel Haskins, P.E.
CIP City Engineer
Public Works & Utilities Dept. – Capital Projects

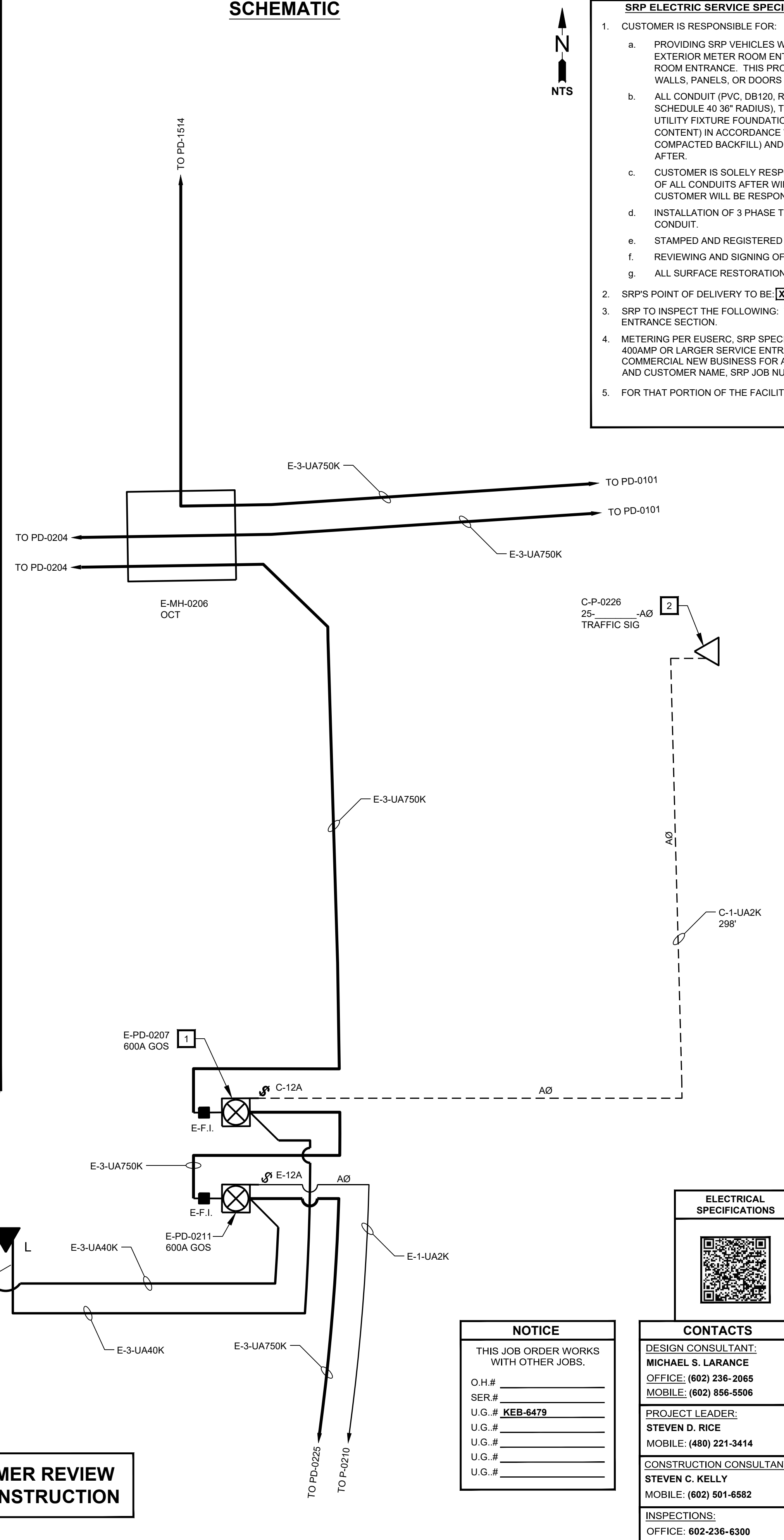
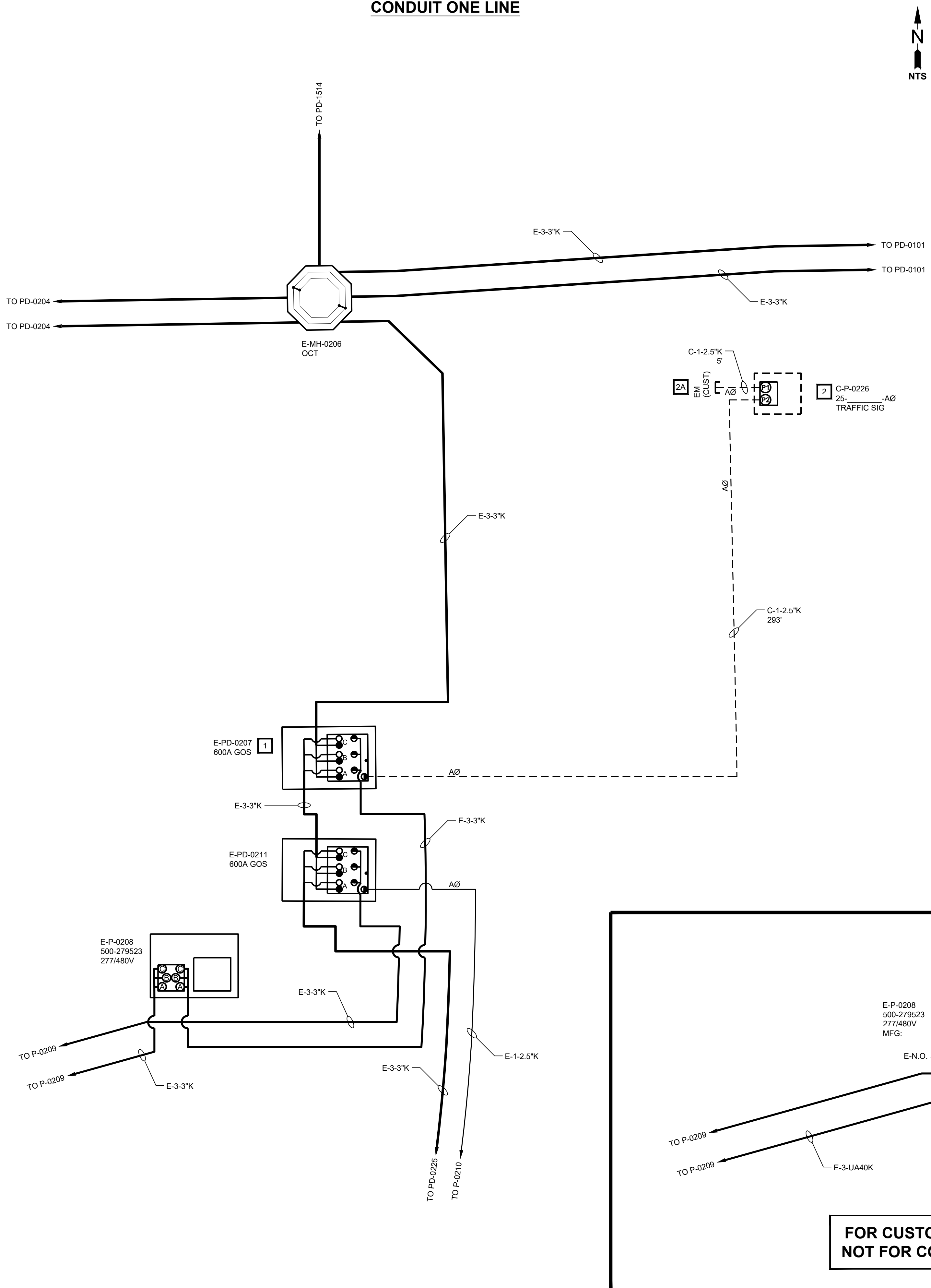
CONDUIT ONE LINE

SCHEMATIC

COMMERCIAL PROJECT NOTES

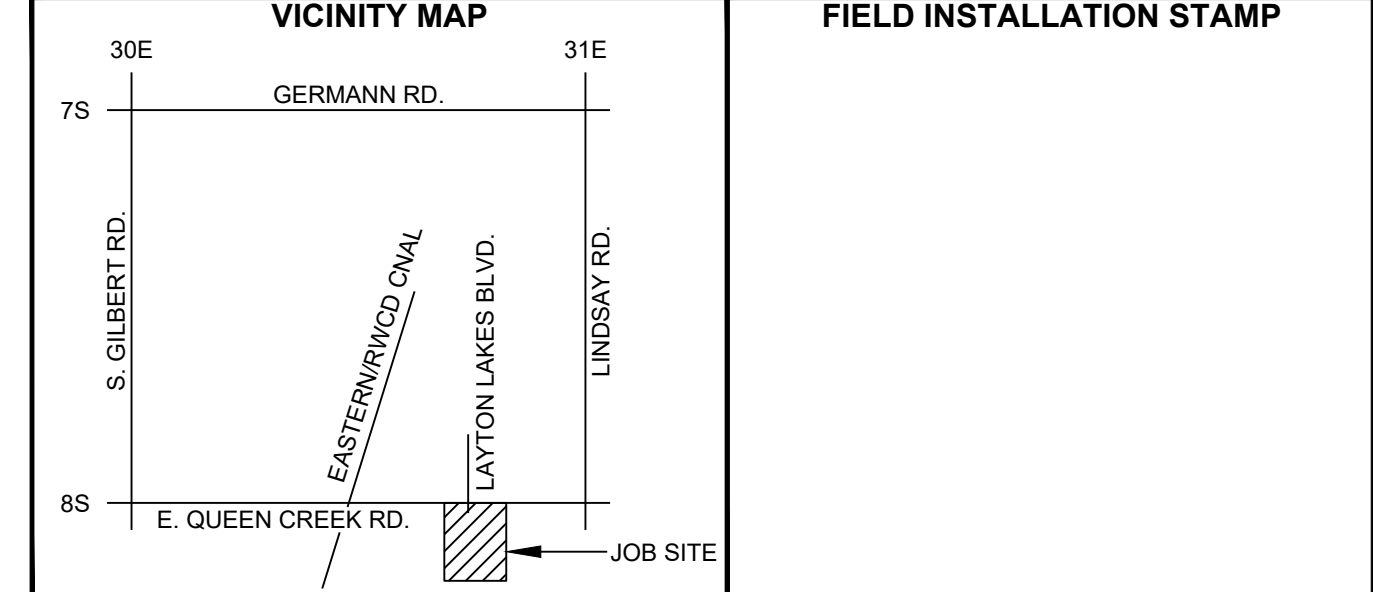
SRP ELECTRIC SERVICE SPECIFICATIONS ARE AVAILABLE ON-LINE AT: [HTTP://WWW.SRPNET.COM/ELECTRIC/BUSINESS/SPECS](http://www.srpnet.com/electric/business/specs)

- CUSTOMER IS RESPONSIBLE FOR:
 - PROVIDING SRP VEHICLES WITH A MINIMUM 12' WIDE AND 20' HIGH PERMANENT TRUCK ACCESS TO ALL SRP EQUIPMENT, ANY SES OR EXTERIOR METER ROOM ENTRANCE. EACH SERVICE ENTRANCE PULL SECTION SHALL OPEN DIRECTLY TOWARDS THE EXTERIOR METER ROOM ENTRANCE. THIS PROVIDES EQUIPMENT ACCESS FOR CABLE INSTALLATION. WITH A MINIMUM WIDTH OF 12', MOVABLE SCREEN WALLS, PANELS, OR DOORS MAY BE USED AS AN ARCHITECTURAL FEATURE, PROVIDED THE ACCESS ROUTE COMPLIES TO SRP
 - ALL CONDUIT (PVC, DB120, RATED FOR 90 DEGREES C CABLE, ASTM F512 WITH ALL ELBOWS VEHICLE ACCESS REQUIREMENTS, BEING SCHEDULE 40 36" RADIUS), TRENCH, BACKFILL, COMPACTION, (UNLESS OTHERWISE SPECIFIED). ALL FILL BELOW AND AROUND ELECTRIC UTILITY FIXTURE FOUNDATION PADS SHALL BE COMPACTED TO AT LEAST 95% OF MAXIMUM DRY DENSITY (AT OR NEAR OPTIMUM MOISTURE CONTENT) IN ACCORDANCE WITH ASTM D698. 1/2 CONTROLLED LOW STRENGTH MATERIAL BACKFILL MAY BE PLACED IN LIEU OF COMPACTED BACKFILL) AND MAINTENANCE OF TRENCH AND CONDUIT UNTIL WIRE IS PULLED. CONTACT SRP TO SCHEDULE A HOT ID AFTER.
 - CUSTOMER IS SOLELY RESPONSIBLE FOR ALL CONDUIT INSTALLED ON THE JOB UNTIL SRP'S WIRE IS INSTALLED. SRP TAKES OWNERSHIP OF ALL CONDUITS AFTER WIRE IS INSTALLED. FOR JOBS THAT REQUIRE CONDUIT SPLICING INTO SRP EXISTING CONDUIT SYSTEMS, THE CUSTOMER WILL BE RESPONSIBLE FOR ANY REPAIRS AND/OR RE-DESIGN IN THE EVENT OF A CONDUIT FAILURE.
 - INSTALLATION OF 3 PHASE TRANSFORMER PAD(S), TEMPLATE(S) AND GROUND ROD(S). LOCATING AND EXPOSING EXISTING STUBBED CONDUIT.
 - STAMPED AND REGISTERED PROPERTY PINS AND FINAL GRADE STAKES FOR PAD AND TRENCH LOCATIONS.
 - REVIEWING AND SIGNING OFF ON MATERIALS DELIVERED TO THE JOB SITE.
 - ALL SURFACE RESTORATIONS AND LANDSCAPE REPAIRS.
- SRP'S POINT OF DELIVERY TO BE: SES JUNCTION BOX TRANSFORMER
- SRP TO INSPECT THE FOLLOWING: TRENCHING, CONDUIT INSTALLATION, MANDREL (IF REQUIRED), EQUIPMENT PAD(S), COMPACTION AND SERVICE ENTRANCE SECTION.
- METERING PER EUSERC, SRP SPECIFICATIONS AND MUNICIPAL CODES. SUBMIT ONE ELECTRONIC COPY OF SHOP DRAWINGS FOR ALL PROPOSED 400AMP OR LARGER SERVICE ENTRANCE SECTION. DOUBLE RESIDENTIAL METER PEDESTALS, AND COMMERCIAL SAFETY SOCKET PEDESTALS TO COMMERCIAL NEW BUSINESS FOR APPROVAL PRIOR TO PURCHASE AND/OR MANUFACTURING. SUCH DRAWINGS SHALL INDICATE THE PROJECT AND CUSTOMER NAME, SRP JOB NUMBER, JOB ADDRESS, CONTRACTORS NAME AND PHONE NUMBERS. SUBMIT TO SHOPDRAW@SRPNET.COM
- FOR THAT PORTION OF THE FACILITY LOCATED WITHIN PUBLIC UTILITY EASEMENTS, THIS SUBMITTAL IS MADE FOR NOTIFICATION PURPOSES ONLY.



GRAPHIC SYMBOLS

<ul style="list-style-type: none"> --- UNDERGROUND STREETLIGHT CONDUCTOR --- UNDERGROUND SERVICE CONDUCTOR --- UNDERGROUND SECONDARY CONDUCTOR --- PROPOSED UNDERGROUND TRENCH/BORE --- EXISTING UNDERGROUND TRENCH/BORE --- INDICATES ABANDONMENT --- MATCH POINTS FOR MULTIPLE SHEETS OF DRAWING (SHADED SYMBOL INDICATES EXISTING FACILITY) (A) PROPOSED SINGLE-PHASE TRANSFORMER (A) PROPOSED THREE-PHASE TRANSFORMER (F) PROPOSED FUSING ENCLOSURE (S) PROPOSED SWITCHING ENCLOSURE (P) PROPOSED 1 PHASE PULLING ENCLOSURE (P) PROPOSED 3 PHASE / FEEDER PULLING ENCLOSURE (P) PROPOSED 4/0 PRIMARY TAP ENCLOSURE (C) PROPOSED CAPACITOR BANK (F) FOR MOST PRIMARY DEVICES OTHER THAN TRANSFORMERS, NO BAR ABOVE THE LETTER INDICATES AN EXIST. FACILITY (NO BAR IN PAD INDICATES FACILITY IS EXISTING) (BAR INDICATES FRONT OF DEVICE) (A SHADED BAR INDICATES FACILITY IS EXISTING) (J) PROPOSED FLUSH-MOUNTED J-BOX (J) PROPOSED ABOVE-GROUND J-BOX 	<p>TYPICAL SRP ABBREVIATIONS</p> <ul style="list-style-type: none"> C = CONSTRUCT R = REMOVE T = TRANSFER A = ABANDON F/SW = FRONT OF SIDEWALK B/SW = BACK OF SIDEWALK F/C = FRONT OF CURB B/C = BACK OF CURB E/P = EDGE OF PAVEMENT L/G = LIP OF GUTTER R/W = RIGHT OF WAY <ul style="list-style-type: none"> (E) E-ELECTRIC (E) "E" WITHOUT CIRCLE INDICATES EXISTING TRENCH (E) "E" WITH CIRCLE INDICATES PROPOSED TRENCH (C) C-COMMUNICATION (W) W-WATER (G) G-GAS (SD) SD-STORM DRAIN (S) S-SEWER (S.E.S.) SERVICE ENTRANCE SECTION (S.E.S.) (M) PROPOSED MANHOLE (PB) PROPOSED PULL BOX (PB) PROPOSED SPLICE POINT (S) PROPOSED STREET LIGHT (S) PROPOSED PRIVATE LIGHT (STAKED BY CUSTOMER) (P) PROPOSED POLE AND RISER (//) DOUBLE SLASH LINES INDICATE REMOVAL (EM) ELECTRONIC MARKER (K) CONDUIT
-------------------------------------------------------------------------------------------------------------------------------------------------------------------------------------------------------------------------------------------------------------------------------------------------------------------------------------------------------------------------------------------------------------------------------------------------------------------------------------------------------------------------------------------------------------------------------------------------------------------------------------------------------------------------------------------------------------------------------------------------------------------------------------------------------------------------------------------------------------------------------------------------------------------------------------------------------------------------------------------------------------------------------------------------------------------------------------------------------------------------------------------------------------------------	----------------------------------------------------------------------------------------------------------------------------------------------------------------------------------------------------------------------------------------------------------------------------------------------------------------------------------------------------------------------------------------------------------------------------------------------------------------------------------------------------------------------------------------------------------------------------------------------------------------------------------------------------------------------------------------------------------------------------------------------------------------------------------------------------------------------------------------------------------------------------------------------------------------------------------------------------------------------------------------------------------------------------------------------------------------------------------------------------



SURVEY AND PERMIT INFORMATION

SRP SURVEY TO STAKE FOR LOCATION AND TIE FOR EASEMENTS. CUSTOMER CONTROL POINTS REQUIRED: YES NO

CUSTOMER'S SURVEY TO STAKE FOR LOCATION/CONSTRUCTION AND TIE FOR EASEMENTS. CUSTOMER'S SURVEYOR MUST ATTEND PRE-CON MEETING.

SRP SURVEY TO STAKE FOR LOCATION, NO EASEMENT REQUIRED.

3RD PARTY EASEMENT REQUIRED.

NO SURVEY REQUIRED.

PERMIT REQUIRED: CITY OF CHANDLER COUNTY _____

NO PERMIT REQ. OTHER _____ PERMIT NO. _____

ELECTRICAL SPECIFICATIONS

CONTACTS

DESIGN CONSULTANT:
MICHAEL S. LARANCE
OFFICE: (602) 236-2065
MOBILE: (602) 856-5506

PROJECT LEADER:
STEVEN D. RICE
MOBILE: (480) 221-3414

CONSTRUCTION CONSULTANT:
STEVEN C. KELLY
MOBILE: (602) 501-6582

INSPECTIONS:
OFFICE: 602-236-6300

NOTICE

THIS JOB ORDER WORKS WITH OTHER JOBS.

O.H.# _____
SER.# _____
U.G.# KEB-6479
U.G.# _____
U.G.# _____
U.G.# _____

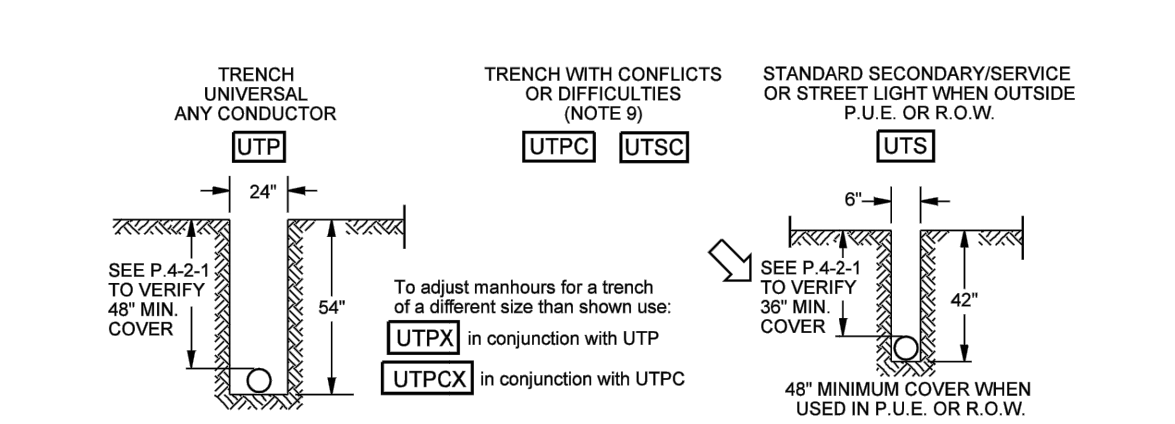
REV	REVISED BY	DATE	REVISION DESCRIPTION
	TAYAZZIE	07/05/2023	JOB CREATED

JOBNAME LAYTON LAKES BLVD W AND QUEEN CREEK RD TS
ADDRESS/LOCATION LAYTON LAKES BLVD W AND QUEEN CREEK RD
CONTACT BECKY BRATCHER PHONE (602) 906-1161
BILLING ACCT NO. _____
FIS JO _____ MAP 1/4 NE S 18 T 2S R 6E
40/ACRE YF-18-01 COORDS 30 11/16E - 7 15/16S
WAM WO T3503492 WAM VERSION _____
COST CENTER 22640
ROUTING CODE DDY+8

SRP

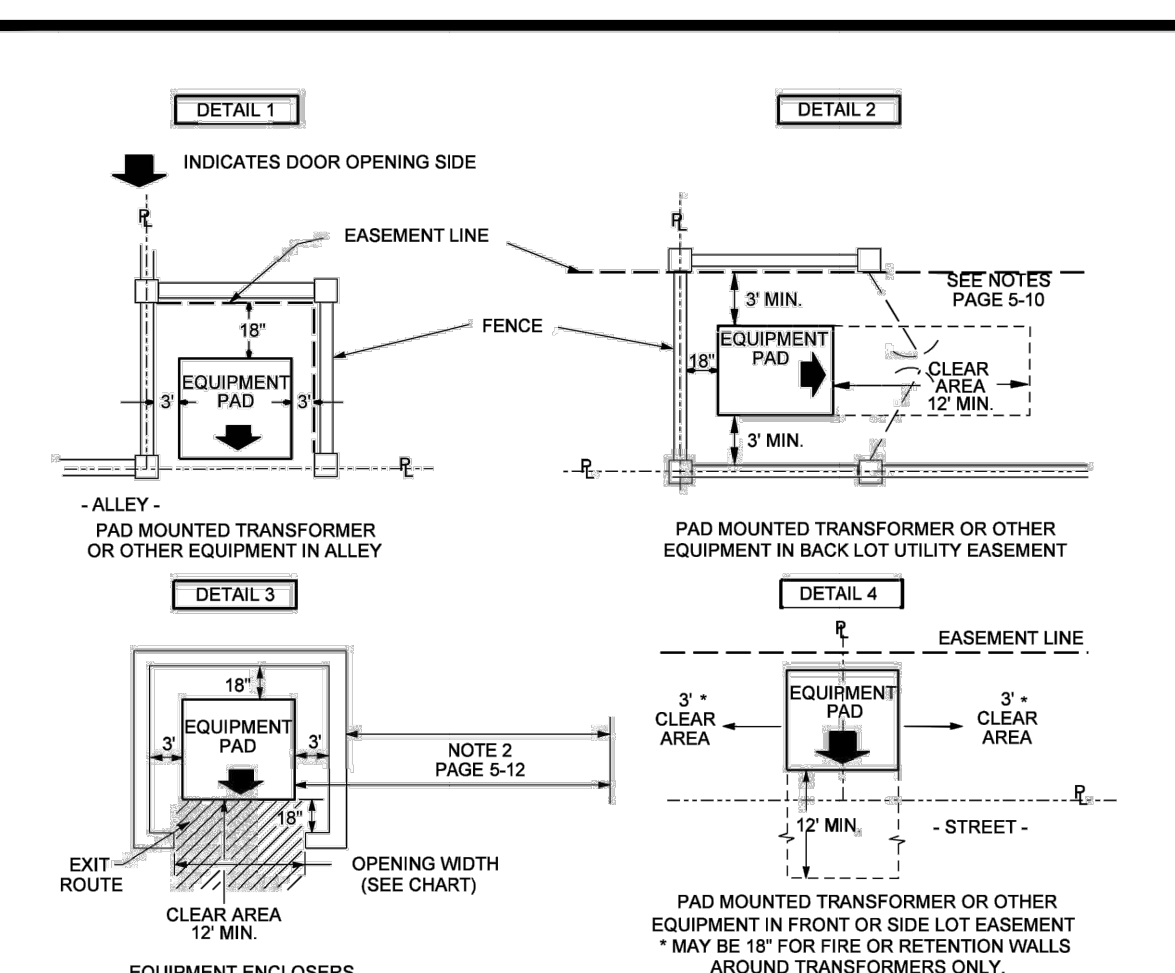
SHEET NUMBER 01 OF 03

FOR CUSTOMER REVIEW
NOT FOR CONSTRUCTION



- NOTES:**
- Trench depths and conduit cover are to be measured from final grade sheets. All trench depths or conduit cover requirements specified on a job drawing shall be followed.
 - These trench codes provide man-hours for excavation only and do not provide for trench backfill.
 - The total trench footage length will be shown in the grid as standard trench, either UTP for primary or UTPS for secondary, street light, or service. When trench is provided by customer, this is the only coding required on the job grid.
 - Non standard trench locations will be identified on the job order sketch with required width and depth dimensions given.
 - When trenching is provided by SRP, non standard trenches shall have 2 compatible unit codes in the grid, UTP plus the UTPX, to adjust the time for digging.
 - When specified depth cannot be obtained because of solid rock, a minimum earth cover of 24" is acceptable, provided a minimum 2" encasement of concrete surrounds the conduit.
 - Use example shown to figure length of UTPX trench, unless the entire trench is non standard.
- MEASUREMENT DISTANCE FOR UTPX CALCULATION
- MID-POINT OF SLOPE CHANGE
- UTP TRENCH
- UTPX quantity = the factor from the UTPX Chart multiplied by the trench footage length which is non-standard, as calculated in item 4. If multiple calculations for non-standard trench are made, add all totals together, only one entry is needed for UTPX quantity in the grid.
- If secondary/service or street light must be placed in P.U.E. or road R.O.W. use UTP trench dimensions and enter UTPS as the compatible unit.
 - Provides 1.5 times regular man-hour
 - Trench bottom to be smooth and free of sharp rocks. Where excavation is in rock, bottom of trench to have protective layer of clean, level, tamped backfill or sand.

Underground Distribution Construction Standards	REV. CORRECTED TRENCH DEPTH TYPD.	Page 1 of 2
SRP	TRENCHING EXCAVATION CODES	ISSUE DATE: 01/15/87
PROPRIETARY MATERIAL	6-11-1	REV. DATE: 03/01/13
		APPROVAL: B. PRIEST
		891E18.DGN



NOTES

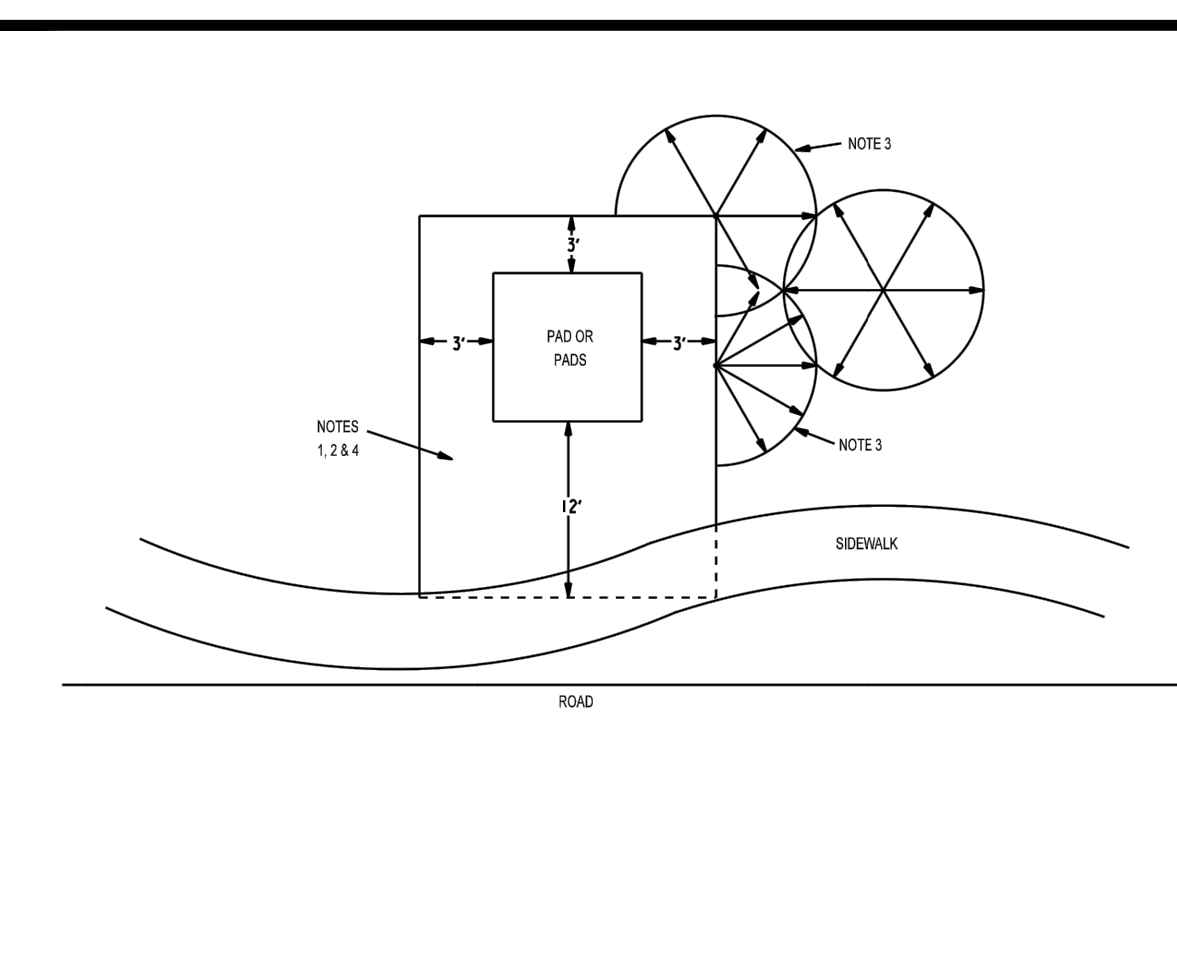
The distances shown around equipment pads shall be totally unobstructed. These distances also apply to poles & structures in overhead areas. EXCEPTION: No pole or structure shall be totally enclosed by a wall or fence with an access gate (upper right diagram not allowed in overhead areas).

TYPE OF EQUIPMENT	MINIMUM OPENING WIDTH
All Except 3Ø Transformers Below	6 1/2'
150 - 500 KVA Transformers	10'
750 - 1,000 KVA Transformers	12'
1,500 - 2,500 KVA Transformers	12'

Electric Service Specifications	CLEARANCES, FENCING, EQUIPMENT OR OBSTRUCTIONS ADJACENT TO SRP EQUIPMENT INSTALLATIONS	Page 1 of 3
SRP	5-11	ISSUE DATE: 04/13/84
PROPRIETARY MATERIAL		REV. DATE: 06/09/17
		APPROVAL: R. BARBAY
		890E45.DGN

- NOTES**
- Minimum vertical or horizontal separations between electric conduit systems and communications conduit systems (NESC Rule 320B2).
 - Minimum clearance between an electric conduit system and other existing underground structures or utilities (Note 4):
 - Horizontal clearance for parallel structures (NESC Rule 320B):
 - An alternative to 12" of 85-90% compacted earth is a rigid support for the upper structure to prevent it from transferring any direct load to lower structure.
 - Conduit should be installed as far as practical from a water main to protect it from being undermined if the main breaks.
 - Municipals and other utilities may have additional requirements.
-
-
-

Electric Service Specifications	CLEARANCES UNDERGROUND CONDUIT	ISSUE DATE: 04/13/85
SRP	5-3	REV. DATE: 10/25/12
PROPRIETARY MATERIAL		APPROVAL: W. LARAMEE
		890E149.DGN

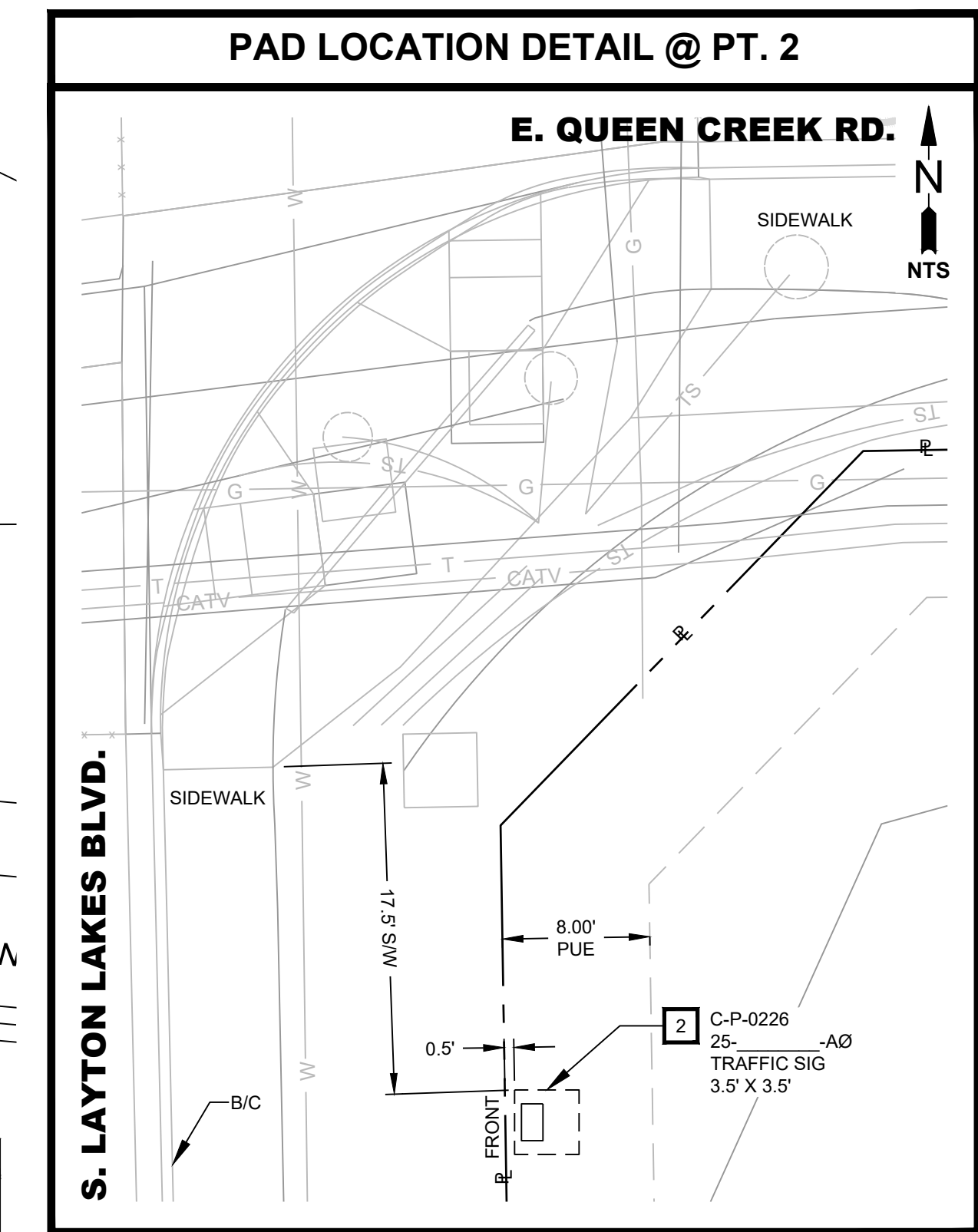
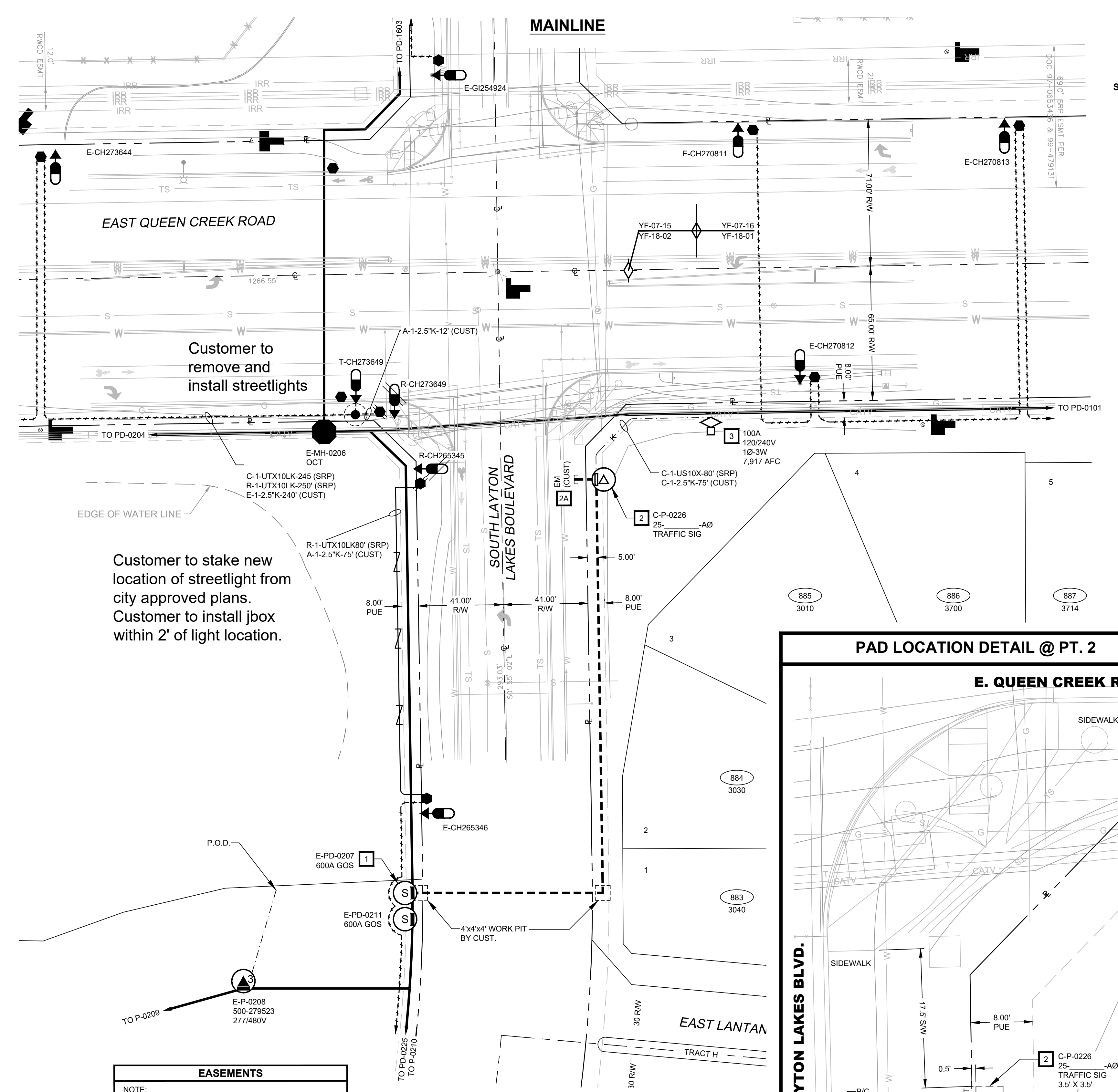


Electric Service Specifications	CLEARANCES DRY LANDSCAPE CONTROLLED AREA DETAIL	ISSUE DATE: 03/03/01
SRP	5-10	REV. DATE: 10/26/12
PROPRIETARY MATERIAL		APPROVAL: W. LARAMEE
		890E133.DGN

- *SPLICE POINT NOTES:**
- CUSTOMER TO EXCAVATE AND EXPOSE EXISTING CONDUIT UNLESS OTHERWISE NOTED.
 - SRP TO PHASE ID CONDUIT.
 - CUSTOMER TO SPLICE ALL CONDUIT UNLESS OTHERWISE NOTED.
 - CUSTOMER TO BACKFILL.

- CONDUIT AND MULE TAPE SPECS**
- CONDUIT WILL BE PVC D9120 RATED 90 C CABLE MEETING THE REQUIREMENTS OF ASTM F512
 - CUSTOMER SHALL PROVIDE & INSTALL 2500 LB TENSILE STRENGTH 5/8" PRE-LUBRICATED MULE TAPE FOR ALL SERVICE CONDUITS

FOR CUSTOMER REVIEW NOT FOR CONSTRUCTION



CONTACTS

DESIGN CONSULTANT:
MICHAEL S. LARANCE
OFFICE: (602) 236-2065
MOBILE: (602) 856-5506

PROJECT LEADER:
STEVEN D. RICE
MOBILE: (480) 221-3414

CONSTRUCTION CONSULTANT:
STEVEN C. KELLY
MOBILE: (602) 501-6582

INSPECTIONS:
OFFICE: 602-236-6300

NATURAL GAS

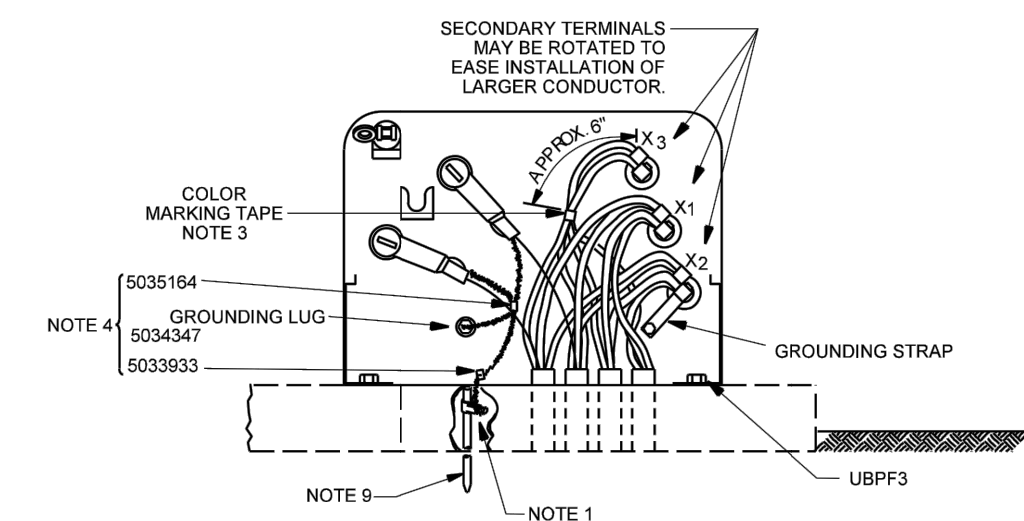
JOBNAME LAYTON LAKES BLVD W AND QUEEN CREEK RD TS
ADDRESS/LOCATION LAYTON LAKES BLVD W AND QUEEN CREEK RD
CONTACT BECKY BRATCHER PHONE (602) 906-1161
BILLING ACCT NO. _____

FIS JO _____ MAP 1/4 NE S 18 T 2S R 6E
40/ACRE YF-18-01 COORDS 30 11/16E - 7/15/6S
WAM WO T3503492 WAM VERSION _____

COST CENTER 22640
ROUTING CODE DDY+8

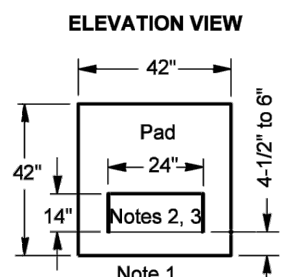
ARIZONA 811
SRP
SHEET NUMBER 02 OF 03

SECTION 7: TRANSFORMER PADS

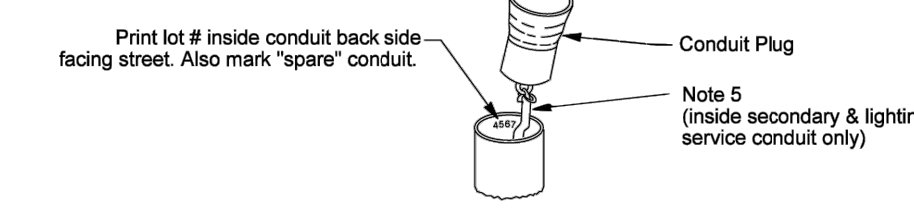


- NOTES**
1. PRIOR TO THE TRANSFORMER PAD BEING SET, TELCO AND/OR CABLE TV WILL STUB A BONDING WIRE TO THE GROUND ROD. SRP WILL CONNECT THIS BOND WIRE TO THE GROUND ROD.
 2. A FENCE IS NOT ALLOWED TO BE BUILT ACROSS FRONT OF TRANSFORMER. A GATE IS PERMISSIBLE IF IT IS FREE OF LOCKS THAT WOULD PROHIBIT ACCESS BY SRP PERSONNEL.
 3. FOR CABLE AND TRANSFORMER IDENTIFICATION, SEE IDENTIFICATION MARKING METHODS IN THE MISCELLANEOUS SECTION.
 4. ALL CONCENTRIC NEUTRAL WIRES MUST BE CONNECTED TOGETHER WITH A COMPRESSION CONNECTOR. ONE CONCENTRIC NEUTRAL IS TO BE CONNECTED TO THE GROUND ROD. THE OTHER CONCENTRIC NEUTRAL IS TO BE CONNECTED TO THE TANK GROUND.
 5. SEE LUBRICATING PROCEDURE FOR TRANSFORMER BUSHINGS AND ELBOWS IN THE CABLE AND ACCESSORIES SECTION.
 6. WHEN PRIMARY CABLES ARE CUT TO LENGTH, THEY MUST BE LONG ENOUGH TO REACH ONE BUSHING AND PARKING STAND.
 7. THE PENTA BOLT MUST BE TIGHTENED AND THE CABINET LOCKED AT ALL TIMES.
 8. SECONDARY PHASE BUSHINGS X1 AND X3 ARE TO HAVE A QUICK CONNECT BAR INSTALLED WITHOUT USE OF JAM NUTS. REMOVE FACTORY INSTALLED JAM NUTS. THE NEUTRAL BUSHING X2 WILL REQUIRE THE USE OF ONE JAM NUT TO TIGHTEN THE GROUND STRAP AGAINST THE INSTALLED BAR CONNECTOR. THE NEUTRAL BUSHING DOES NOT REQUIRE AN INSULATING COVER.
 9. INSTALL GROUND ROD SO IT DOES NOT INTERFERE WITH PRIMARY AND SECONDARY SERVICE CABLES. NOT REQUIRED WHEN DIRECT-BURIED BARE CONCENTRIC NEUTRAL CABLE IS PRESENT.
 10. ALL PAD ELEVATIONS SHALL BE ESTABLISHED BY SURVEY (BLUE TOP) AND TOP OF PAD SHALL BE MINIMUM OF 4" ABOVE FINAL GRADE IN IMMEDIATE AREA.

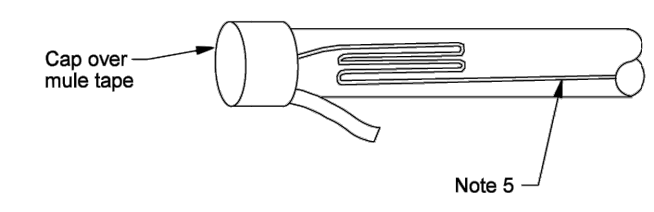
Underground Distribution Construction Standards SRP PROPRIETARY MATERIAL	TRANSFORMERS SINGLE PHASE PAD-MOUNTED INSTALLATION	ISSUE DATE: 08/05/13 REV. DATE: 02/02/15 APPROVAL: B. PRIEST 8513E179.DGN
	9-10-1	



Secondary/Service Conduit Marking and Mule Tape (by party installing the conduit)



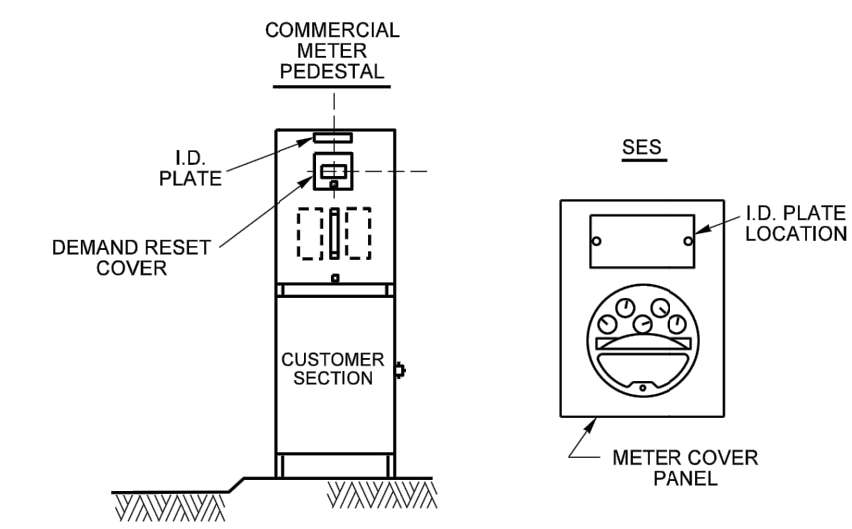
Mule Tape in Service Conduit Only



- NOTES**
1. For reference only. Single phase pad provided by SRP.
 2. Primary and secondary opening.
 3. A stub-up template, along with design details by SRP, will locate conduit and ground rod within the primary/secondary window.
 4. Top of ground rod and all conduits are to be 5" above final grade for new transformer installations.
 5. Customer installed and approved (section 11), 2,500 pound, continuous (no tied pieces), flat, pre-fabricated pull-tape shall be free moving and not glued to the conduit.

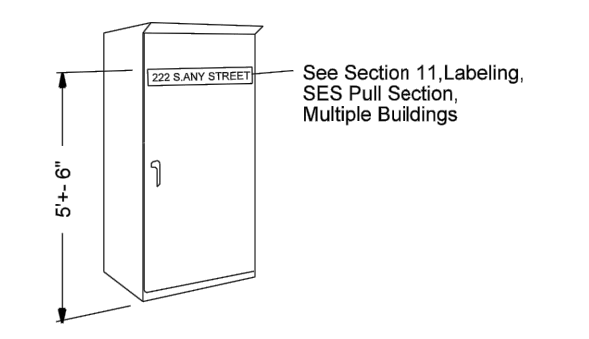
Electric Service Specifications SRP PROPRIETARY MATERIAL	TRANSFORMER PADS PRECAST PAD FOR SINGLE PHASE TRANSFORMER (NOTE 1) 25 TO 167 KVA	ISSUE DATE: 10/25/12 REV. DATE: 11/02/12 APPROVAL: W. Laramie 8509E350.DGN
	7-1	

- E. The identifying Labeling for SESs shall be metal riveted to the meter cover (see page 11-46, detail titled "Labeling SES, Meter Cover Panel"). If the main breakers are not installed directly adjacent to the meter, both the meter and the main breaker shall be identified with individual labels. SRP may require the Customer or their contractor to open the apartments or suites at the time the meters are set in order to verify that each meter socket serves the apartment or suite indicated by the marking labels.

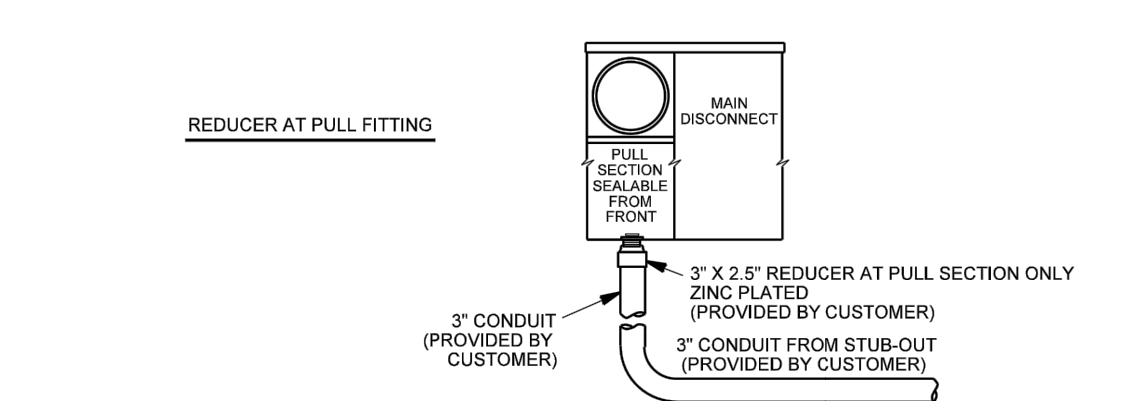
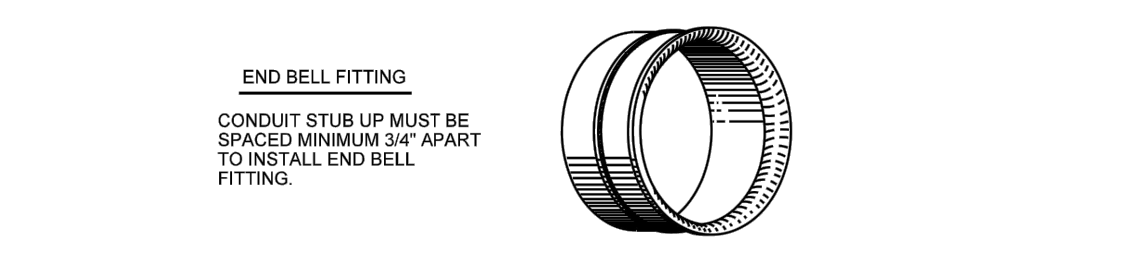
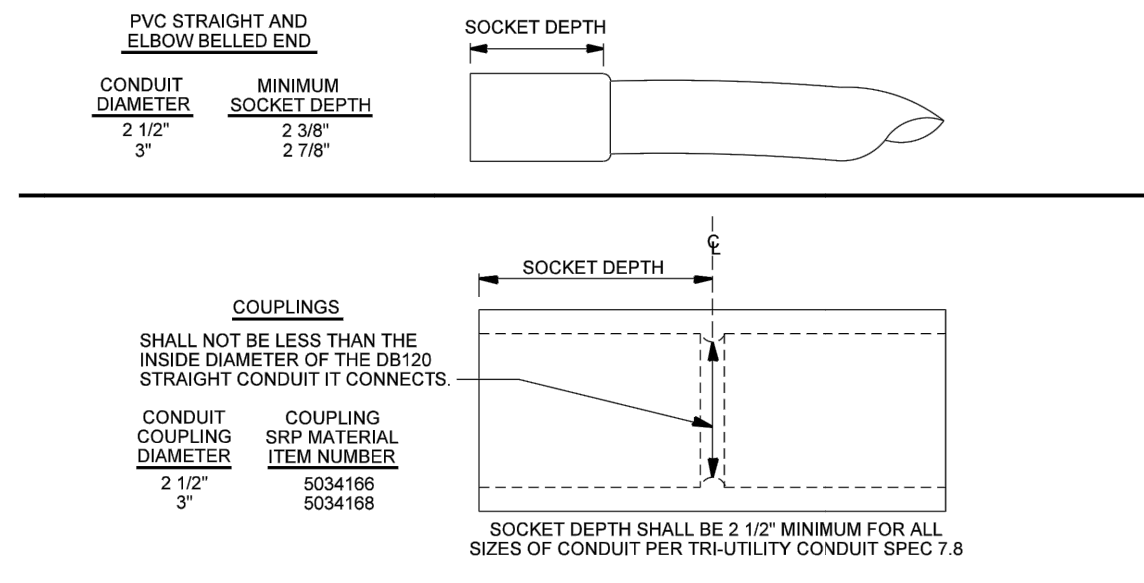


- F. In the case of multiple buildings, the building or unit number and street address shall be identified on the pull section in the manner described below.

SERVICE ENTRANCE SECTION



Electric Service Specifications SRP PROPRIETARY MATERIAL	METERING & SES SERVICE ENTRANCE SECTION ADDRESSING & IDENTIFICATION	Page 2 of 2 ISSUE DATE: 04/15/88 REV. DATE: 11/02/12 APPROVAL: W. LARAMIE 8506E127.DGN
	9-11	

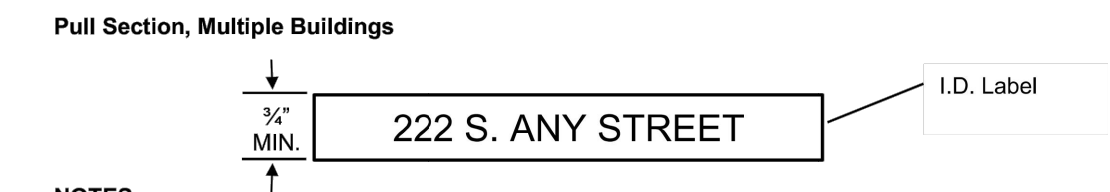


Electric Service Specifications SRP PROPRIETARY MATERIAL	TRENCHING AND CONDUIT SIZES & SPECIFICATIONS BELLED ENDS AND FITTINGS	ISSUE DATE: 03/13/01 REV. DATE: 05/22/13 APPROVAL: W. LARAMIE 8506E127.DGN
	6-3	

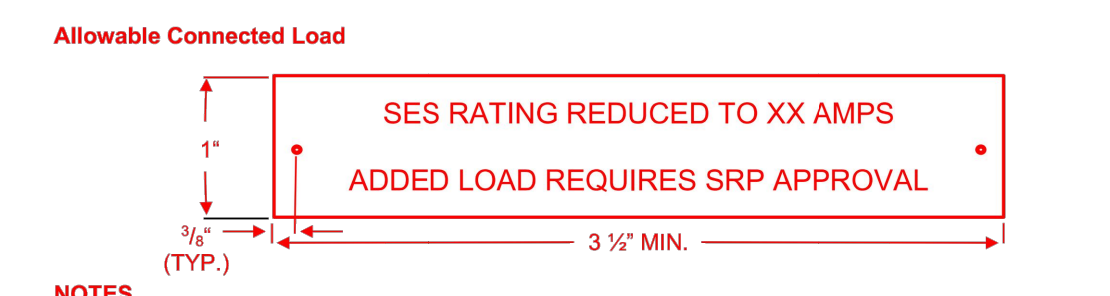
SECTION 11: CONTRACTOR-SUPPLIED MATERIAL



- NOTES**
- The identifying label shall:
1. Be impressed into or raised from a label aluminum or brass (non-ferrous metal).
 2. Have a 1/4" minimum letters (1/16" letters for Dymo-type metal labels).
 3. Have impressions deep enough to prevent it from being obscured by paint.



- NOTES**
- The identifying label shall:
1. Be 3/4" minimum red block letters on white background.
 2. Be an aluminum or brass (non-ferrous) label permanently affixed by metal rivets or double-sided tape (3M F9473PC) to outside of exterior door.
 3. Not be painted directly on the door.



- NOTES**
- The identifying label shall:
1. Be 1/4" minimum red block letters on white background.
 2. Be an aluminum or brass (non-ferrous) label permanently affixed by metal rivets or double-sided tape (3M F9473PC) to outside of exterior door.
 3. Not be painted directly on the door.

Electric Service Specifications SRP PROPRIETARY MATERIAL	CONTRACTOR-SUPPLIED MATERIAL LABELING, SES	REV. Added Allowable Connected Load DGN: 8509E318 ISSUE DATE: 11/19/10 REV. DATE: 05/09/19 APPROVAL: N. Sabbah E8511-51.doc
	11-51	

CONTACTS

DESIGN CONSULTANT:
MICHAEL S. LARANCE
OFFICE: (602) 236-2065
MOBILE: (602) 856-5506

PROJECT LEADER:
STEVEN D. RICE
MOBILE: (480) 221-3414

CONSTRUCTION CONSULTANT:
STEVEN C. KELLY
MOBILE: (602) 501-6582

INSPECTIONS:
OFFICE: 602-236-6300



NATURAL GAS

JOBNAME LAYTON LAKES BLVD W AND QUEEN CREEK RD TS
ADDRESS/LOCATION LAYTON LAKES BLVD W AND QUEEN CREEK RD
CONTACT BECKY BRATCHER PHONE (602) 906-1161
BILLING ACCT NO. _____

FIS JO _____ MAP 1/4 NE S 18 T 2S R 6E
40/ACRE YF-18-01 COORDS 30 11/16E - 7 15/16S
WAM WO T3503492 WAM VERSION _____

COST CENTER 22640
ROUTING CODE DDY+8

CONTACT Arizona 811 at least two full working days before you begin excavation
Call 811 or click Arizona811.com
SRP
PROPRIETARY MATERIAL

SHEET NUMBER 03 OF 03