

AIRPORT LAYOUT PLAN

FOR

CHANDLER MUNICIPAL AIRPORT

Chandler, Arizona

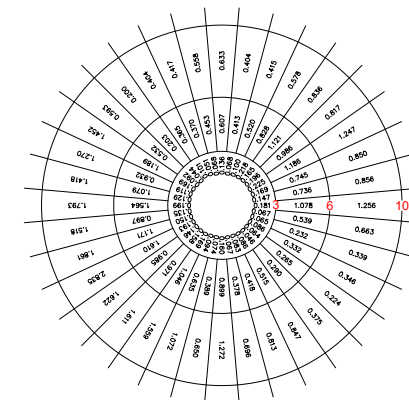
DEVIATIONS FROM FAA STANDARDS

SEE SHEET 2

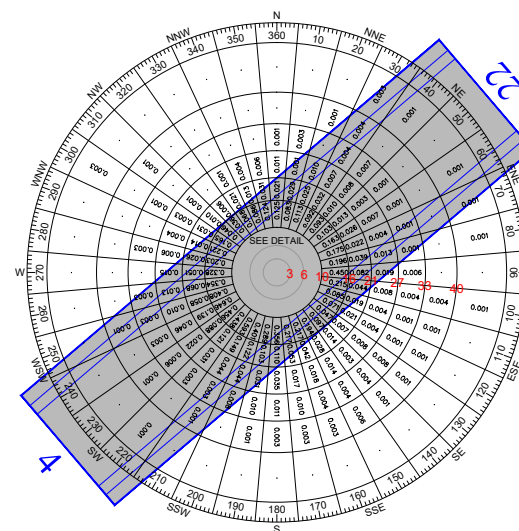
RUNWAY DATA TABLE

	RUNWAY 4R-22L		RUNWAY 4L-22R	
	EXISTING	ULTIMATE	EXISTING	ULTIMATE
	4R	22L	4L	22R
AIRCRAFT APPROACH CATEGORY-DESIGN GROUP	B-II		B-II SMALL	
CRITICAL AIRCRAFT	BEECH 400A		KING AIR B200	
CRITICAL AIRCRAFT WINGSPAN (FEET)	43.50'		54.50'	
CRITICAL AIRCRAFT UNDERCARRIAGE WIDTH (FEET)	9.33'		17.17'	
CRITICAL AIRCRAFT APPROACH SPEED (KNOTS)	105		104	
CRITICAL AIRCRAFT MAXIMUM CERTIFIED TAKEOFF WEIGHT (POUNDS)	16,100		12,500	
APPROACH VISIBILITY MINIMUMS AND TYPE OF APPROACH (LOWEST)	>1 MILE/NP		>1 MILE/VIS	
F.A.R. PART 77 CATEGORY AND APPROACH SLOPE	NP 34:1		VISUAL 20:1	
PERCENTAGE OF WIND COVERAGE (ALL WEATHER IN MPH)	(SEE WIND DATA TABLE)			
LINE OF SIGHT REQUIREMENT MET	YES			
MAXIMUM ELEVATION (ABOVE MSL)	1243.29		1236.54	
LOWEST ELEVATION (ABOVE MSL)	1235.89		1231.08	
RUNWAY DIMENSIONS	4,868.83' X 75'		4,400.04' X 75'	
RUNWAY BEARING (TRUE BEARING - DECIMAL DEGREES)	49.6261'		49.6154'	
RUNWAY APPROACH SURFACES (F.A.R. PART 77)	34:1		20:1	
RUNWAY END ELEVATION (NAVD 88) - SEE ALSO THE RUNWAY END DATA TABLE	1235.89		1231.08	
RUNWAY THRESHOLD DISPLACEMENT	NONE		NONE	
RUNWAY THRESHOLD SITING REQUIREMENTS (APPENDIX 2, CATEGORY)	4		2	
RUNWAY STOPWAY	100'		NONE	
RUNWAY SAFETY AREA WIDTH (RSA) - STANDARDS/EXISTING	150'/150'		150'/150'	
RUNWAY SAFETY AREA (RSA) BEYOND RWY STOP END - STANDARDS/EXISTING	300'/300'		300'/300'	
RUNWAY OBSTACLE FREE ZONE WIDTH (OFZ) <NO KNOWN PENETRATIONS EXIST>	250'		250'	
RUNWAY OBSTACLE FREE ZONE (OFZ) BEYOND RUNWAY STOP END	200'		200'	
RUNWAY OBJECT FREE AREA WIDTH (OFA)	500'		500'	
RUNWAY OBJECT FREE AREA (OFA) BEYOND RUNWAY STOP END	300'		300'	
RUNWAY PAVEMENT SURFACE MATERIAL (AND ADOT PCI RATING/DATE)	ASPHALT (100/7-2013)		ASPHALT (68/7-2013)	
RUNWAY PAVEMENT STRENGTH (POUNDS)	30,000 (S)		30,000 (S)	
RUNWAY EFFECTIVE GRADIENT	0.152%		0.124%	
RUNWAY MAXIMUM GRADIENT	0.152%		0.124%	
RUNWAY TOUCHDOWN ZONE ELEVATION (ABOVE MSL)	1240.45		1234.80	
RUNWAY LIGHTING	NONPRECISION VISUAL		NONPRECISION VISUAL	
RUNWAY APPROACH LIGHTING	MIRL		MIRL	
RUNWAY TO TAXIWAY SEPARATION (FROM CENTERLINE TO CENTERLINE)	400'		240'	
RUNWAY HOLD LINE POSITION (FROM RUNWAY CENTERLINE)	200'		125'	
TAXIWAY TO TAXIWAY SEPARATION (FROM CENTERLINE TO CENTERLINE)	240'		240'	
TAXIWAY CENTERLINE TO FIXED OR MOVEABLE OBJECT	65.5'		65.5'	
TAXIWAY LIGHTING	MIL		MIL	
TAXIWAY MARKINGS	CENTERLINE/EDGE		CENTERLINE/EDGE	
TAXIWAY SURFACE MATERIAL	ASPHALT		ASPHALT	
TAXIWAY WINGTIP CLEARANCE	26'		26'	
TAXIWAY WIDTH	40' MINIMUM		35' MINIMUM	
TAXIWAY SAFETY AREA WIDTH	79'		79'	
TAXIWAY OBJECT FREE AREA WIDTH	131'		131'	
RUNWAY VISUAL NAVIGATIONAL AIDS	PAPI-4 REIL		PAPI-4 REIL	
RUNWAY INSTRUMENT NAVIGATIONAL AIDS	GPS/NDB		GPS	
TYPE OF AERONAUTICAL SURVEY REQUIRED (AC 150/5300-18C)	NOT VERTICALLY GUIDED		NOT VERTICALLY GUIDED	
RUNWAY PROTECTION ZONE (RPZ) DIMENSIONS	500 x 1,000		250 x 1,000	

*Pavement strengths are expressed in Single(S), Dual(D) and Dual Tandem(DT) wheel loading capacities.



0 TO 10 KNOT WINDROSE DETAIL
CALM WINDS = 24.507%



ALL WEATHER WIND ROSE

WIND DATA TABLE

RUNWAY	10.5 KNOT	13 KNOT	16 KNOT	SOURCE
4/22	95.67%	97.77%	99.21%	CHANDLER MUNICIPAL AIRPORT AWOS DATA FROM THE NATIONAL CLIMATIC DATA CENTER - PERIOD OF RECORD IS 01/01/1999 THROUGH 03/26/2012 (71,989 TOTAL RECORDS)
4	34.64%	35.39%	35.88%	
22	61.03%	62.38%	63.33%	

INDEX OF DRAWINGS

1	TITLE SHEET	6	RUNWAY 4R INNER APPROACH SURFACE DRAWING
2	AIRPORT LAYOUT DRAWING	7	RUNWAY 22L INNER APPROACH SURFACE DRAWING
3	TERMINAL AREA DRAWING - NORTH	8	RUNWAY 4L INNER APPROACH SURFACE DRAWING
4	TERMINAL AREA DRAWING - SOUTH	9	RUNWAY 22R INNER APPROACH SURFACE DRAWING
5	AIRPORT AIRSPACE DRAWING (FAR PART 77)	10	AIRPORT PROPERTY MAP
		11	LAND USE DRAWING

AIRPORT DATA TABLE

CHANDLER MUNICIPAL AIRPORT (CHD)		
CITY: CHANDLER, ARIZONA	COUNTY: MARICOPA, ARIZONA	RANGE: 5 EAST TOWNSHIP: 2 SOUTH
EXISTING	ULTIMATE	
STATE AND NPAS AIRPORT SERVICE LEVEL	RELIEVER (RL)	RELIEVER (RL)
AIRPORT REFERENCE CODE	B-II	B-II
AIRPORT ELEVATION	1243 MSL	1244 MSL
MEAN MAXIMUM TEMPERATURE OF HOTTEST MONTH	106° F (July)	106° F (July)
AIRPORT REFERENCE POINT (ARP)	Latitude 33° 16' 08.56154" N	33° 16' 09.65296" N
COORDINATES (NAD 83*)	Longitude 111° 48' 40.61609" W	111° 48' 39.08796" W
AIRPORT and TERMINAL NAVIGATIONAL AIDS (OWNED BY THE AIRPORT)	NDB	VOR
MISCELLANEOUS FACILITIES	AWOS	AWOS
	ROTATING BEACON	ROTATING BEACON
MAGNETIC DECLINATION (06-01-2015 WMM MODEL)	10°28' E (0.5° W/YEAR)	
GPS Approach	VOR/GPS RWY 4L	GPS/LPV RWY 4L

RUNWAY END DATA

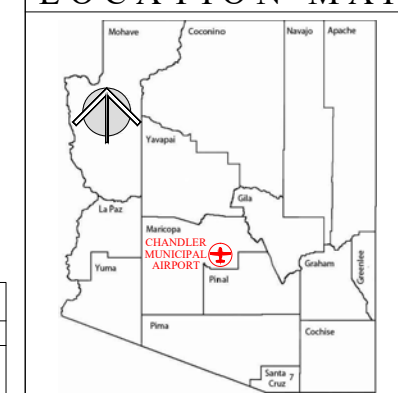
RUNWAY	EXISTING		ULTIMATE	
	ELEV	LAT/LONG	ELEV	LAT/LONG
Runway 4R	1235.89	33° 15' 56.60896" N 111° 48' 50.98721" W	1235.89	33° 15' 56.60896" N 111° 48' 50.98721" W
Runway 22L	1243.29	33° 16' 27.81282" N 111° 48' 07.29486" W	1244.36	33° 16' 32.17801" N 111° 48' 01.18145" W
Runway 4L	1231.08	33° 15' 50.80773" N 111° 49' 11.82770" W	1231.08	33° 15' 50.80773" N 111° 49' 11.82770" W
Runway 22R	1236.54	33° 16' 19.01407" N 111° 48' 32.35012" W	1236.54	33° 16' 19.01407" N 111° 48' 32.35012" W

*GEODETIC DATUM: ARIZONA CENTRAL STATE PLANE DATUM, NAD83 HORIZ, NAVD88 VERTICAL

DECLARED DISTANCES DATA

	EXISTING RUNWAY 4R-22L		ULTIMATE RUNWAY 4R-22L		EXISTING RUNWAY 4L-22R		ULTIMATE RUNWAY 4L-22R	
	4R	22L	4R	22L	4L	22R	4L	22R
TORA - TAKEOFF RUN AVAILABLE	4,869'	4,869'	5,550'	5,550'	4,400'	4,400'	4,400'	4,400'
TODA - TAKEOFF DISTANCE AVAILABLE	4,869'	4,869'	5,550'	5,550'	4,400'	4,400'	4,400'	4,400'
ASDA - ACCELERATE-STOP DISTANCE AVAILABLE	4,869'	4,869'	5,550'	5,550'	4,400'	4,400'	4,400'	4,400'
LDA - LANDING DISTANCE AVAILABLE	4,869'	4,869'	5,550'	5,550'	4,400'	4,400'	4,400'	4,400'

LOCATION MAP



SPONSOR APPROVAL

BY: _____ DATE _____

FAA APPROVAL

VICINITY MAP



CHANDLER MUNICIPAL AIRPORT (CHD)
Chandler, Arizona

nicholas j pela & associates
airport consultants

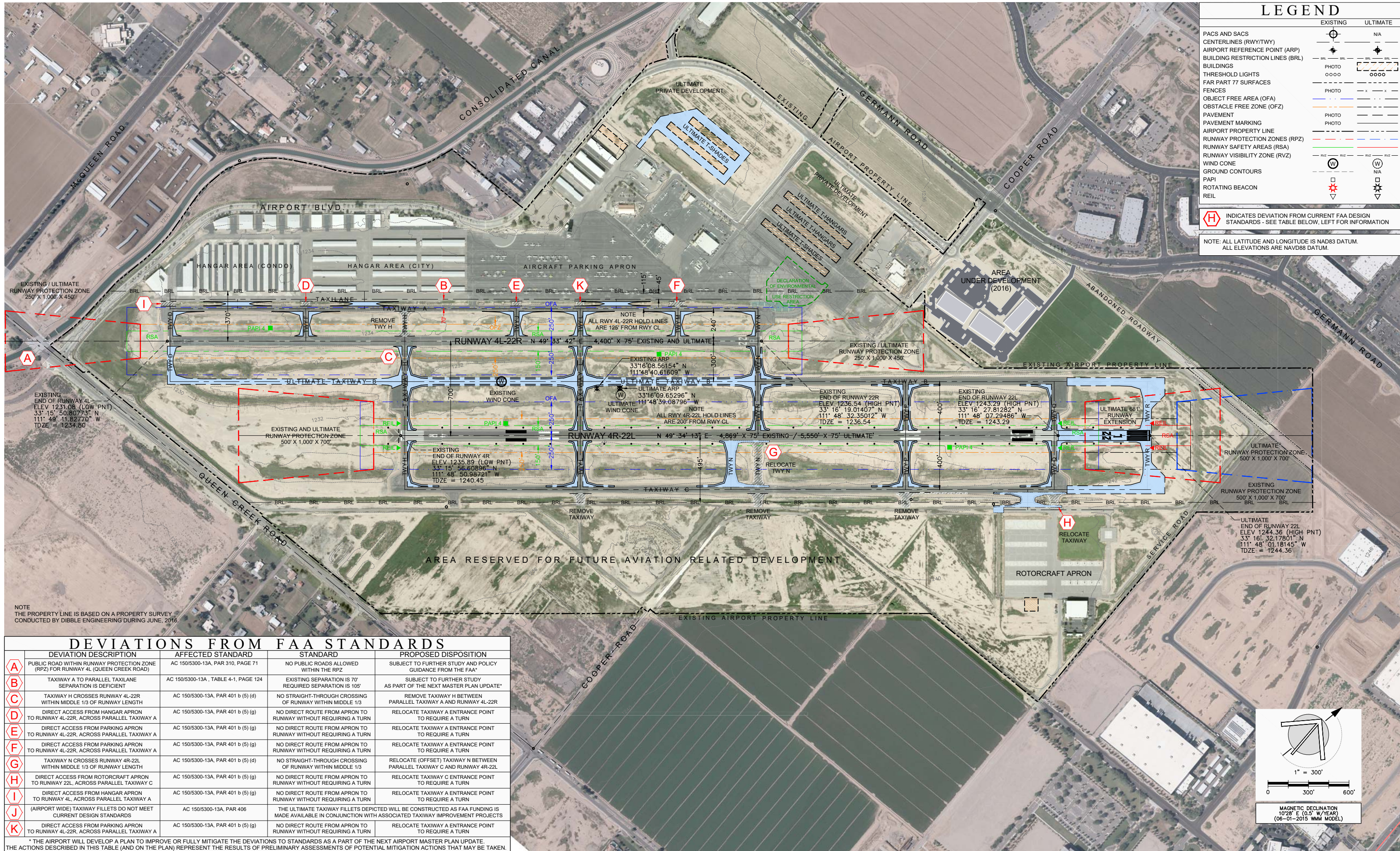
2930 East Northern Ave., Bldg A-100
Phoenix, Arizona 85028
(602) 349-9967
nicholas.pela@nicholaspela.com

REVISION DESCRIPTION	DATE

TITLE SHEET
CHANDLER MUNICIPAL AIRPORT (CHD)
CHANDLER, ARIZONA

07/15/16
DRAFT

Planning:	NJP	Sheet No.	1
Drawn:	NJP	of	11
Checked:	NJP		
Date:	---		



LEGEND

	EXISTING	ULTIMATE
PACS AND SACS		N/A
CENTERLINES (RWY/TWY)		N/A
AIRPORT REFERENCE POINT (ARP)		
BUILDING RESTRICTION LINES (BRL)		
BUILDINGS		
THRESHOLD LIGHTS		
FAR PART 77 SURFACES		
FENCES		
OBJECT FREE AREA (OFA)		
OBSTACLE FREE ZONE (OFZ)		
PAVEMENT		
PAVEMENT MARKING		
AIRPORT PROPERTY LINE		
RUNWAY PROTECTION ZONES (RPZ)		
RUNWAY SAFETY AREAS (RSA)		
RUNWAY VISIBILITY ZONE (RVZ)		
WIND CONE		
GROUND CONTOURS		
PAPI		
ROTATING BEACON		
REIL		

[H] INDICATES DEVIATION FROM CURRENT FAA DESIGN STANDARDS - SEE TABLE BELOW, LEFT FOR INFORMATION

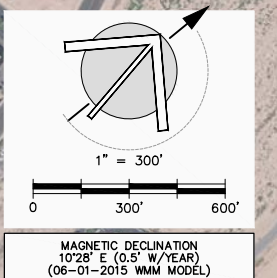
NOTE: ALL LATITUDE AND LONGITUDE IS NAD83 DATUM. ALL ELEVATIONS ARE NAVD88 DATUM.

NOTE
THE PROPERTY LINE IS BASED ON A PROPERTY SURVEY CONDUCTED BY DIBBLE ENGINEERING DURING JUNE, 2016.

DEVIATIONS FROM FAA STANDARDS

DEVIATION DESCRIPTION	AFFECTED STANDARD	STANDARD	PROPOSED DISPOSITION
A PUBLIC ROAD WITHIN RUNWAY PROTECTION ZONE (RPZ) FOR RUNWAY 4L (QUEEN CREEK ROAD)	AC 150/5300-13A, PAR 310, PAGE 71	NO PUBLIC ROADS ALLOWED WITHIN THE RPZ	SUBJECT TO FURTHER STUDY AND POLICY GUIDANCE FROM THE FAA*
B TAXIWAY A TO PARALLEL TAXIWAY SEPARATION IS DEFICIENT	AC 150/5300-13A, TABLE 4-1, PAGE 124	EXISTING SEPARATION IS 70' REQUIRED SEPARATION IS 105'	SUBJECT TO FURTHER STUDY AS PART OF THE NEXT MASTER PLAN UPDATE*
C TAXIWAY H CROSSES RUNWAY 4L-22R WITHIN MIDDLE 1/3 OF RUNWAY LENGTH	AC 150/5300-13A, PAR 401 b (5) (d)	NO STRAIGHT-THROUGH CROSSING OF RUNWAY WITHIN MIDDLE 1/3	REMOVE TAXIWAY H BETWEEN PARALLEL TAXIWAY A AND RUNWAY 4L-22R
D DIRECT ACCESS FROM HANGAR APRON TO RUNWAY 4L-22R, ACROSS PARALLEL TAXIWAY A	AC 150/5300-13A, PAR 401 b (5) (g)	NO DIRECT ROUTE FROM APRON TO RUNWAY WITHOUT REQUIRING A TURN	RELOCATE TAXIWAY A ENTRANCE POINT TO REQUIRE A TURN
E DIRECT ACCESS FROM PARKING APRON TO RUNWAY 4L-22R, ACROSS PARALLEL TAXIWAY A	AC 150/5300-13A, PAR 401 b (5) (g)	NO DIRECT ROUTE FROM APRON TO RUNWAY WITHOUT REQUIRING A TURN	RELOCATE TAXIWAY A ENTRANCE POINT TO REQUIRE A TURN
F DIRECT ACCESS FROM PARKING APRON TO RUNWAY 4L-22R, ACROSS PARALLEL TAXIWAY A	AC 150/5300-13A, PAR 401 b (5) (g)	NO DIRECT ROUTE FROM APRON TO RUNWAY WITHOUT REQUIRING A TURN	RELOCATE TAXIWAY A ENTRANCE POINT TO REQUIRE A TURN
G TAXIWAY N CROSSES RUNWAY 4R-22L WITHIN MIDDLE 1/3 OF RUNWAY LENGTH	AC 150/5300-13A, PAR 401 b (5) (d)	NO STRAIGHT-THROUGH CROSSING OF RUNWAY WITHIN MIDDLE 1/3	RELOCATE (OFFSET) TAXIWAY N BETWEEN PARALLEL TAXIWAY C AND RUNWAY 4R-22L
H DIRECT ACCESS FROM ROTORCRAFT APRON TO RUNWAY 22L, ACROSS PARALLEL TAXIWAY C	AC 150/5300-13A, PAR 401 b (5) (g)	NO DIRECT ROUTE FROM APRON TO RUNWAY WITHOUT REQUIRING A TURN	RELOCATE TAXIWAY C ENTRANCE POINT TO REQUIRE A TURN
I DIRECT ACCESS FROM HANGAR APRON TO RUNWAY 4L, ACROSS PARALLEL TAXIWAY A	AC 150/5300-13A, PAR 401 b (5) (g)	NO DIRECT ROUTE FROM APRON TO RUNWAY WITHOUT REQUIRING A TURN	RELOCATE TAXIWAY A ENTRANCE POINT TO REQUIRE A TURN
J (AIRPORT WIDE) TAXIWAY FILLETS DO NOT MEET CURRENT DESIGN STANDARDS	AC 150/5300-13A, PAR 406	THE ULTIMATE TAXIWAY FILLETS DEPICTED WILL BE CONSTRUCTED AS FAA FUNDING IS MADE AVAILABLE IN CONJUNCTION WITH ASSOCIATED TAXIWAY IMPROVEMENT PROJECTS	
K DIRECT ACCESS FROM PARKING APRON TO RUNWAY 4L-22R, ACROSS PARALLEL TAXIWAY A	AC 150/5300-13A, PAR 401 b (5) (g)	NO DIRECT ROUTE FROM APRON TO RUNWAY WITHOUT REQUIRING A TURN	RELOCATE TAXIWAY A ENTRANCE POINT TO REQUIRE A TURN

* THE AIRPORT WILL DEVELOP A PLAN TO IMPROVE OR FULLY MITIGATE THE DEVIATIONS TO STANDARDS AS A PART OF THE NEXT AIRPORT MASTER PLAN UPDATE. THE ACTIONS DESCRIBED IN THIS TABLE (AND ON THE PLAN) REPRESENT THE RESULTS OF PRELIMINARY ASSESSMENTS OF POTENTIAL MITIGATION ACTIONS THAT MAY BE TAKEN.



CHANDLER MUNICIPAL AIRPORT (CHD)

Chandler, Arizona

nicholas j. pela & associates
airport consultants

2930 East Northern Ave., Bldg A-100
Phoenix, Arizona 85028
(602) 349-9967
nicholas.pela@nicholaspela.com

REVISION DESCRIPTION	DATE

AIRPORT LAYOUT DRAWING

CHANDLER MUNICIPAL AIRPORT (CHD) CHANDLER, ARIZONA

07/15/16
DRAFT

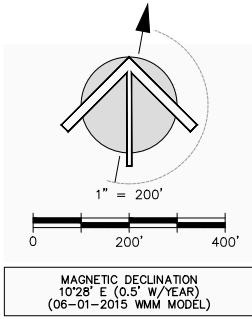
Planning:	NJP	Sheet No.	2
Drawn:	NJP		
Checked:	NJP		
Date:	---		of 11



MATCH LINE - SEE SHEET 4

EXISTING BUILDINGS / FACILITIES			
NO.	DESCRIPTION	ULTIMATE DISPOSITION	EXISTING ELEVATION
1	TERMINAL / ADMINISTRATION BUILDING	UNCHANGED	1252.53
2	AIR TRAFFIC CONTROL TOWER (ATCT) & ROTATING BEACON	UNCHANGED	1319.49
3	AIRPORT OPERATIONS AND MAINTENANCE	UNCHANGED	1256.60
4	FIXED BASE OPERATOR / TENANTS	UNCHANGED	1245.18
5	FIXED BASE OPERATOR / TENANTS	UNCHANGED	1254.96
6	FIXED BASE OPERATOR / TENANTS	UNCHANGED	1257.22
7	FBO / TENANTS AND FUEL STORAGE FACILITY	UNCHANGED	1266.14
8	FIXED BASE OPERATOR / TENANTS	UNCHANGED	1252.61
9	FIXED BASE OPERATOR / TENANTS	UNCHANGED	1276.48
10	SHADE HANGAR	UNCHANGED	1246.89
11	UNDERGROUND FUEL STORAGE FACILITY	UNCHANGED	1228.00
12	RELOCATED HELIPORT	UNCHANGED	1244.06
13	FUEL FACILITY	UNCHANGED	1230.00
14	OLD TERMINAL BUILDING	REMOVED	--
15	AIR NATIONAL GUARD	UNCHANGED	1260.19
16	FBO OFFICE	UNCHANGED	1258.42
17	TEE HANGARS	UNCHANGED	1248.28
18	TEE HANGARS	UNCHANGED	1256.84
19	TEE HANGARS	UNCHANGED	1256.82
20	---	UNCHANGED	1257.70
53	HELIPORT	UNCHANGED	--

FUTURE BUILDINGS / FACILITIES		
NO.	DESCRIPTION	NOTES
A	T-SHADES	
B	T-SHADES	
C	T-HANGARS	
D	T-HANGARS	
E	T-HANGARS	
F	T-HANGARS	
G	CONVENTIONAL HANGAR	



NOTE: THE PROPERTY LINE IS BASED ON A PROPERTY SURVEY CONDUCTED BY DIBBLE ENGINEERING DURING JUNE, 2016.



nicholas j pela & associates
airport consultants
2930 East Northern Ave., Bldg A-100
Phoenix, Arizona 85028
(602) 349-9967
nicholas.pela@nicholaspela.com

△	REVISION DESCRIPTION	DATE

TERMINAL AREA DRAWING - NORTH
CHANDLER MUNICIPAL AIRPORT (CHD)
CHANDLER, ARIZONA

DRAFT

Planning:	NJP	Sheet No.	3
Drawn:	NJP		of 11
Checked:	NJP		
Date:	---		

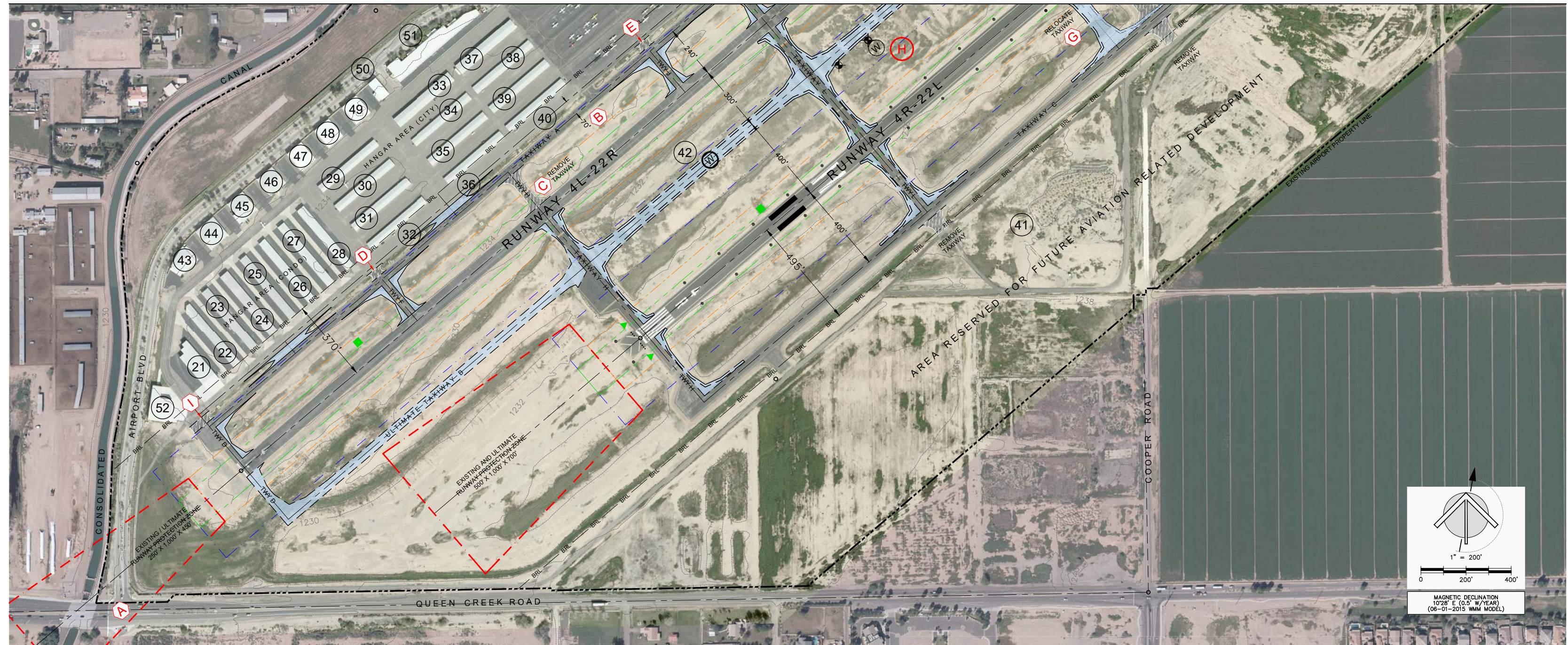
EXISTING BUILDINGS / FACILITIES			
NO.	DESCRIPTION	ULTIMATE DISPOSITION	EXISTING ELEVATION
21	T-HANGARS	UNCHANGED	1253.19
22	T-HANGARS	UNCHANGED	1250.00
23	T-HANGARS	UNCHANGED	1249.48
24	T-HANGARS	UNCHANGED	1252.13
25	T-HANGARS	UNCHANGED	1250.32
26	T-HANGARS	UNCHANGED	1250.83
27	T-HANGARS	UNCHANGED	1251.30
28	T-HANGARS	UNCHANGED	1251.72
29	T-HANGARS	UNCHANGED	1251.50
30	T-HANGARS	UNCHANGED	1248.19
31	T-HANGARS	UNCHANGED	1250.10
32	T-HANGARS	REMOVE	1247.88
33	T-HANGARS	UNCHANGED	1254.79
34	T-HANGARS	UNCHANGED	1250.47
35	T-HANGARS	UNCHANGED	1248.58
36	T-HANGARS	REMOVE	1250.08

EXISTING BUILDINGS / FACILITIES			
NO.	DESCRIPTION	ULTIMATE DISPOSITION	EXISTING ELEVATION
37	T-HANGARS	UNCHANGED	1253.91
38	T-HANGARS	UNCHANGED	1245.99
39	T-HANGARS	UNCHANGED	1246.52
40	T-HANGARS	REMOVE	1248.70
41	EXISTING NDB / AWOS SITE	UNCHANGED	1234.00
42	WIND CONE AND SEGMENTED CIRCLE	---	---
43	CONVENTIONAL HANGAR	UNCHANGED	1255.43
44	CONVENTIONAL HANGAR	UNCHANGED	1257.62
45	CONVENTIONAL HANGAR	UNCHANGED	1255.67
46	CONVENTIONAL HANGAR	UNCHANGED	1257.24
47	CONVENTIONAL HANGAR	UNCHANGED	1256.65
48	CONVENTIONAL HANGAR	UNCHANGED	1256.64
49	CONVENTIONAL HANGAR	UNCHANGED	1256.72
50	CONVENTIONAL HANGAR	UNCHANGED	1256.41
51	CONVENTIONAL HANGAR	UNCHANGED	1257.53
52	CONVENTIONAL HANGAR	UNCHANGED	1255.46

FUTURE BUILDINGS / FACILITIES		
NO.	DESCRIPTION	NOTES
H	WIND CONE / SEGMENTED CIRCLE	

NOTE
THE PROPERTY LINE IS BASED ON A PROPERTY SURVEY
CONDUCTED BY DIBBLE ENGINEERING DURING JUNE, 2016.

MATCH LINE - SEE SHEET 3



CHANDLER MUNICIPAL AIRPORT (CHD)



Chandler, Arizona

nicholas j pela & associates
airport consultants

2930 East Northern Ave., Bldg A-100
Phoenix, Arizona 85028
(602) 349-9967
nicholas.pela@nicholaspela.com

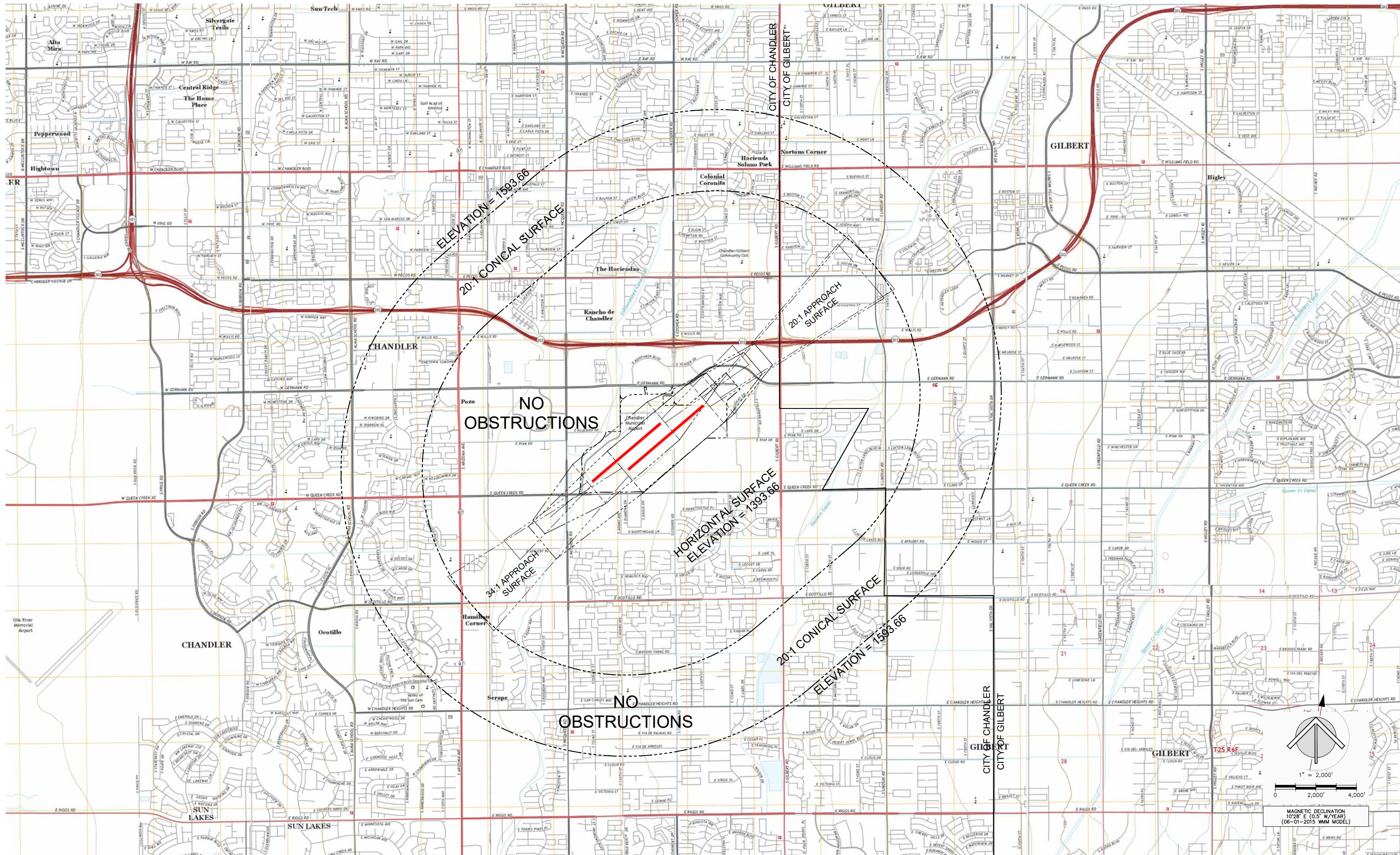


REVISION DESCRIPTION	DATE

TERMINAL AREA DRAWING - SOUTH
CHANDLER MUNICIPAL AIRPORT (CHD)
CHANDLER, ARIZONA

DRAFT

Planning:	NJP	Sheet No.	4
Drawn:	NJP	of	11
Checked:	NJP		
Date:	---		



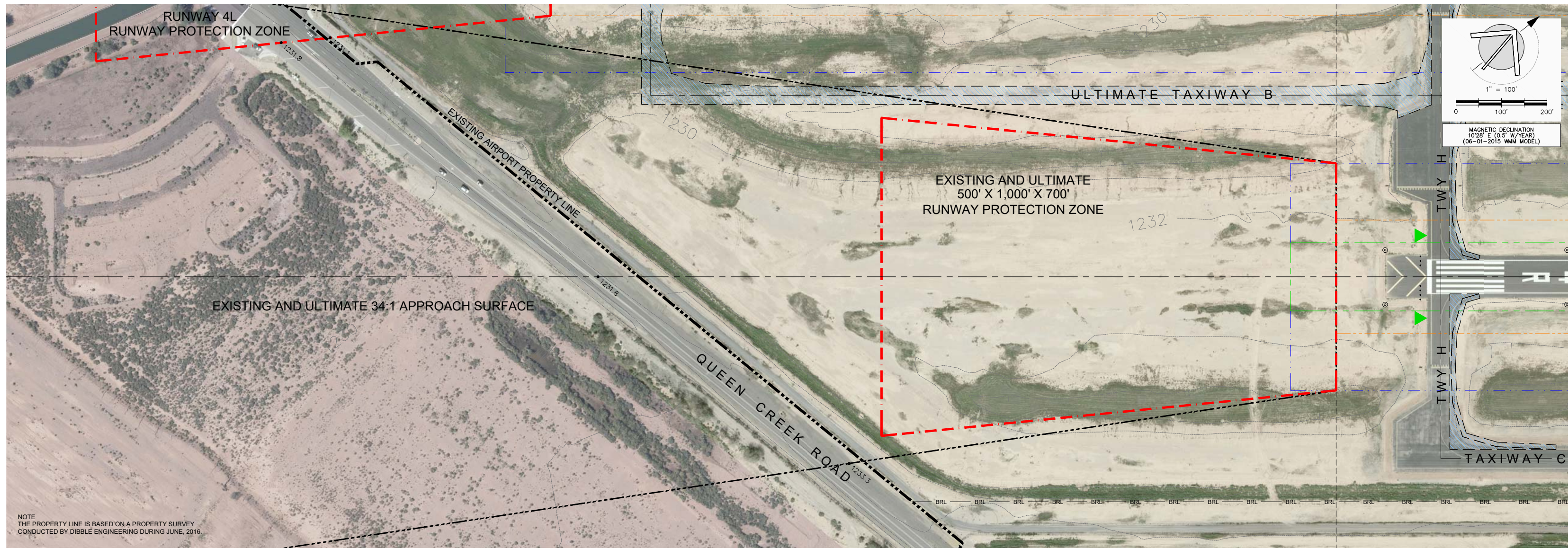

nicholas j. pela & associates
 airport consultants
 2930 East Northern Ave., Bldg A-100
 Phoenix, Arizona 85028
 (602) 349-9967
 nicholas.pela@nicholaspela.com

△	REVISION DESCRIPTION	DATE

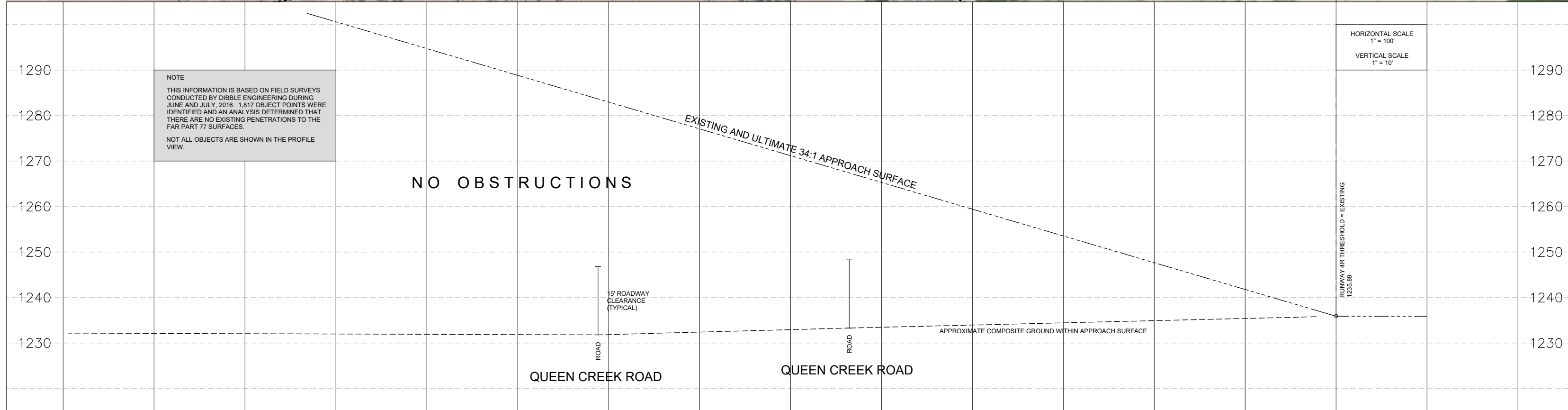
AIRPORT AIRSPACE DRAWING (FAR PART 77)
CHANDLER MUNICIPAL AIRPORT (CHD)
CHANDLER, ARIZONA

07/15/16
DRAFT

Planning:	NJP	Sheet No.	
Drawn:	NJP		5
Checked:	NJP		of
Date:	---		11



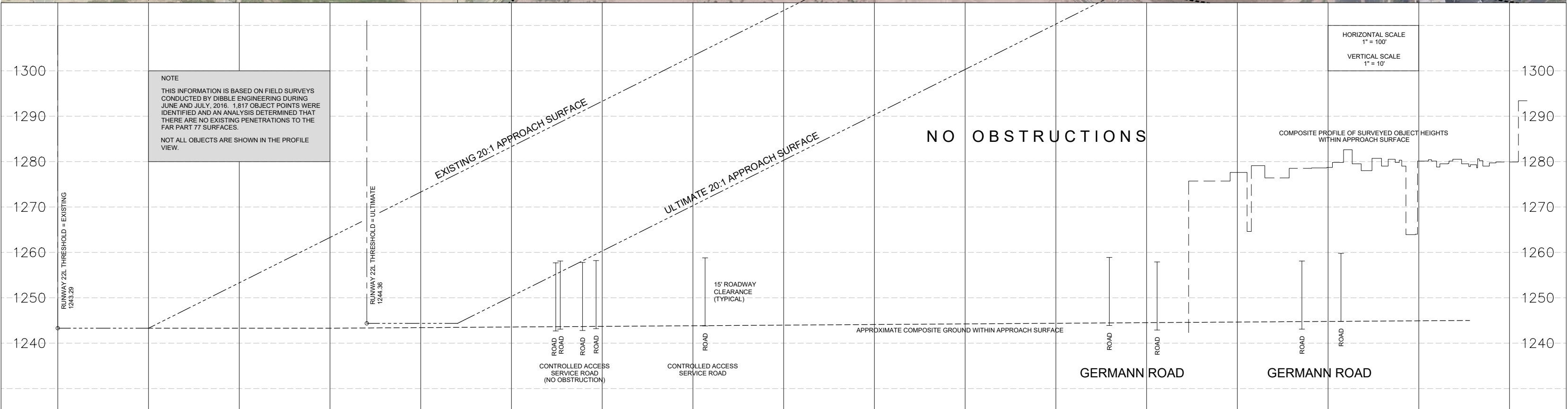
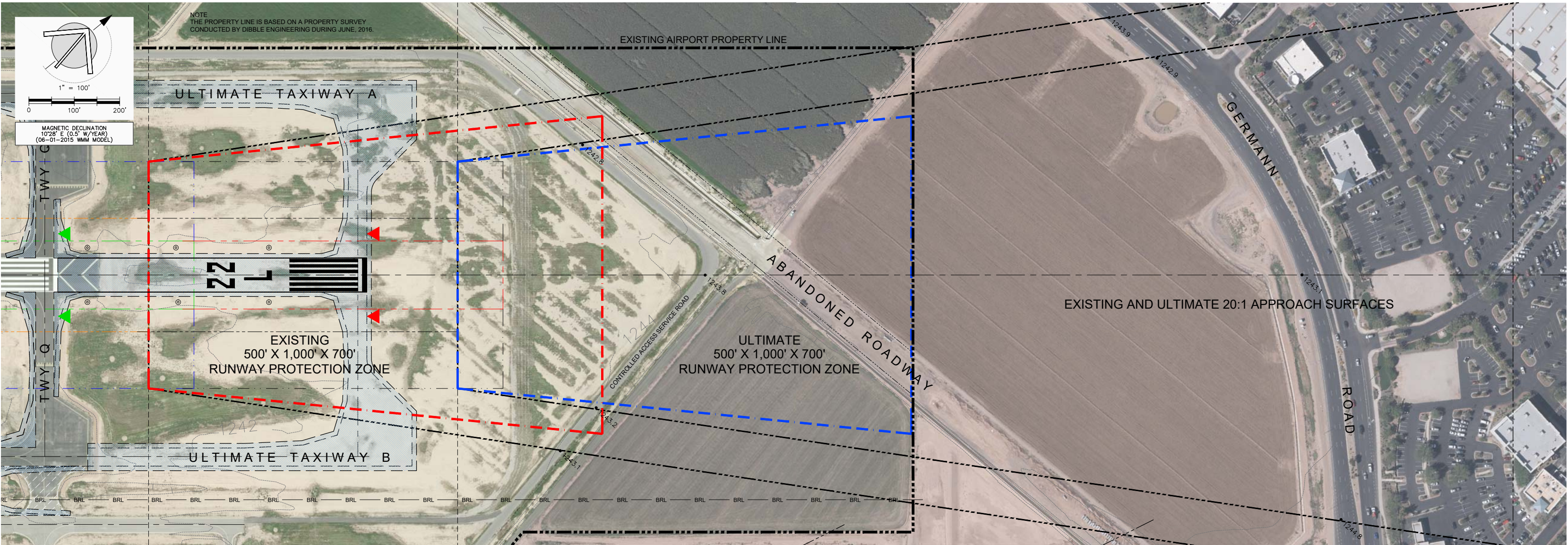
NOTE
THE PROPERTY LINE IS BASED ON A PROPERTY SURVEY
CONDUCTED BY DIBBLE ENGINEERING DURING JUNE, 2016.



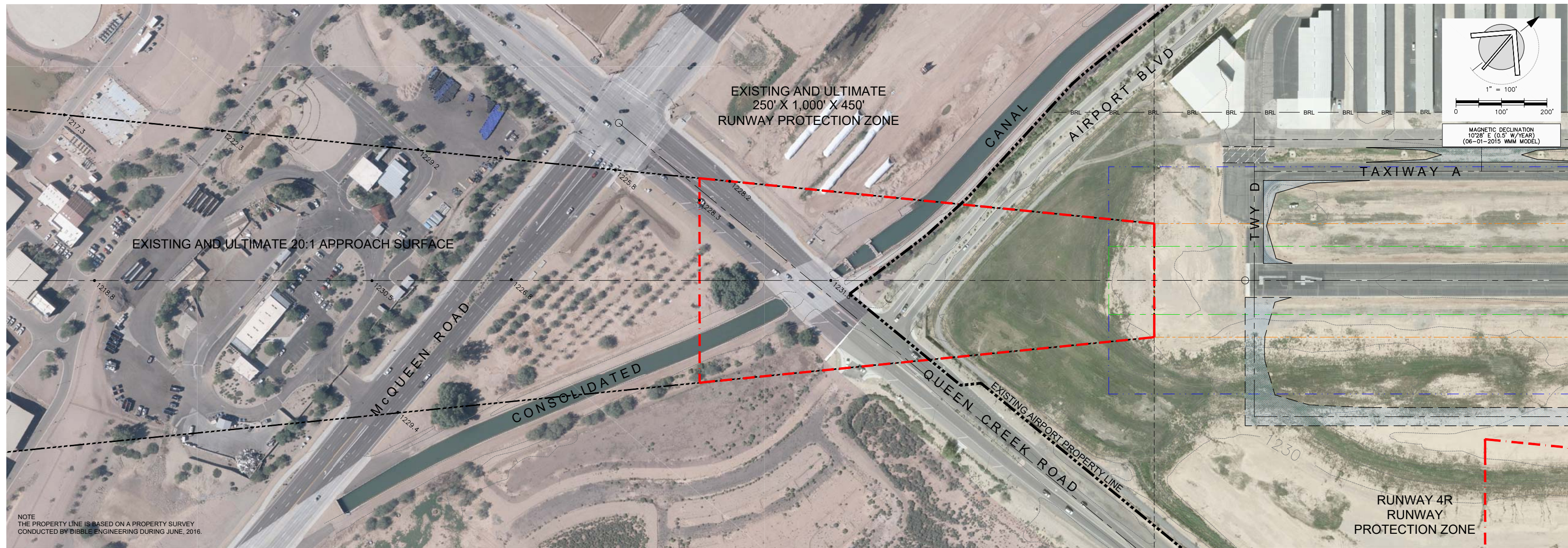
△	REVISION DESCRIPTION	DATE

RUNWAY 4R INNER APPROACH SURFACE DRAWING 07/15/16
CHANDLER MUNICIPAL AIRPORT (CHD)
CHANDLER, ARIZONA
DRAFT

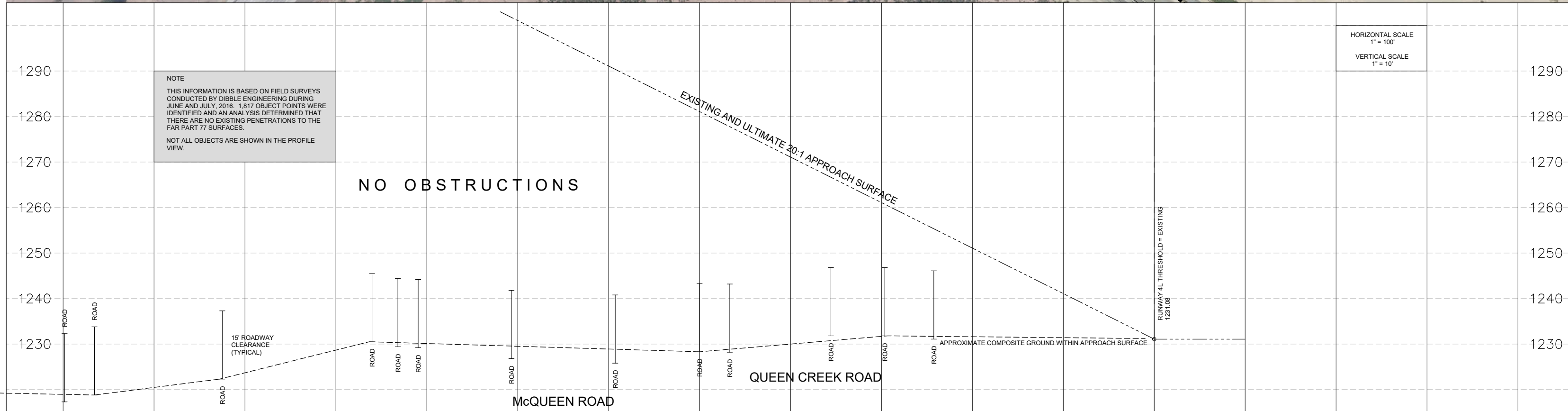
Planning:	NJP	Sheet No.	6
Drawn:	NJP	of	11
Checked:	NJP		
Date:	---		



REVISION	DESCRIPTION	DATE



NOTE
THE PROPERTY LINE IS BASED ON A PROPERTY SURVEY
CONDUCTED BY DIBBLE ENGINEERING DURING JUNE, 2016.



CHANDLER MUNICIPAL AIRPORT (CHD)
Chandler, Arizona

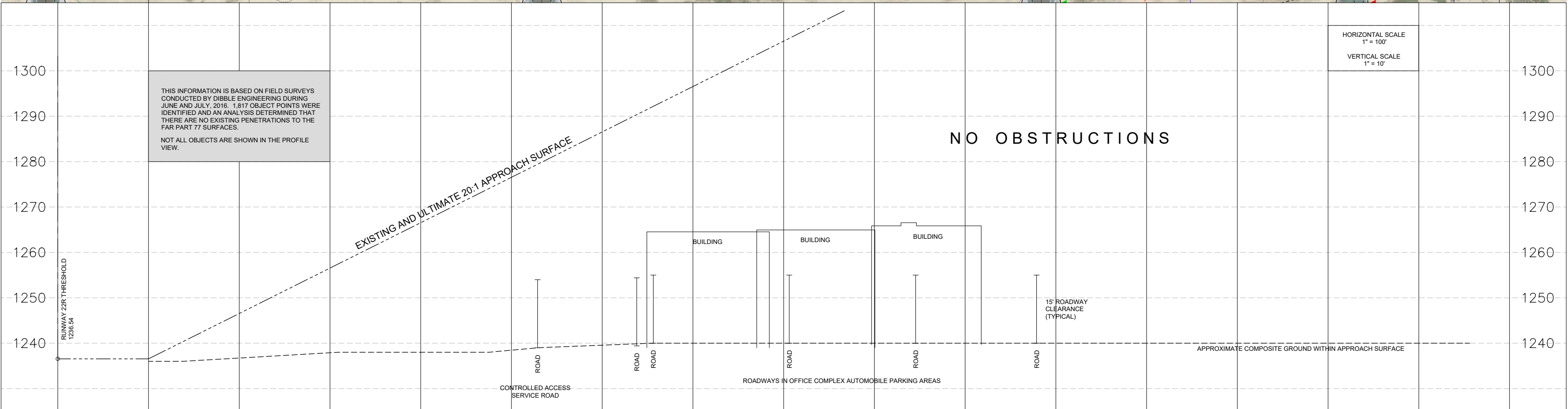
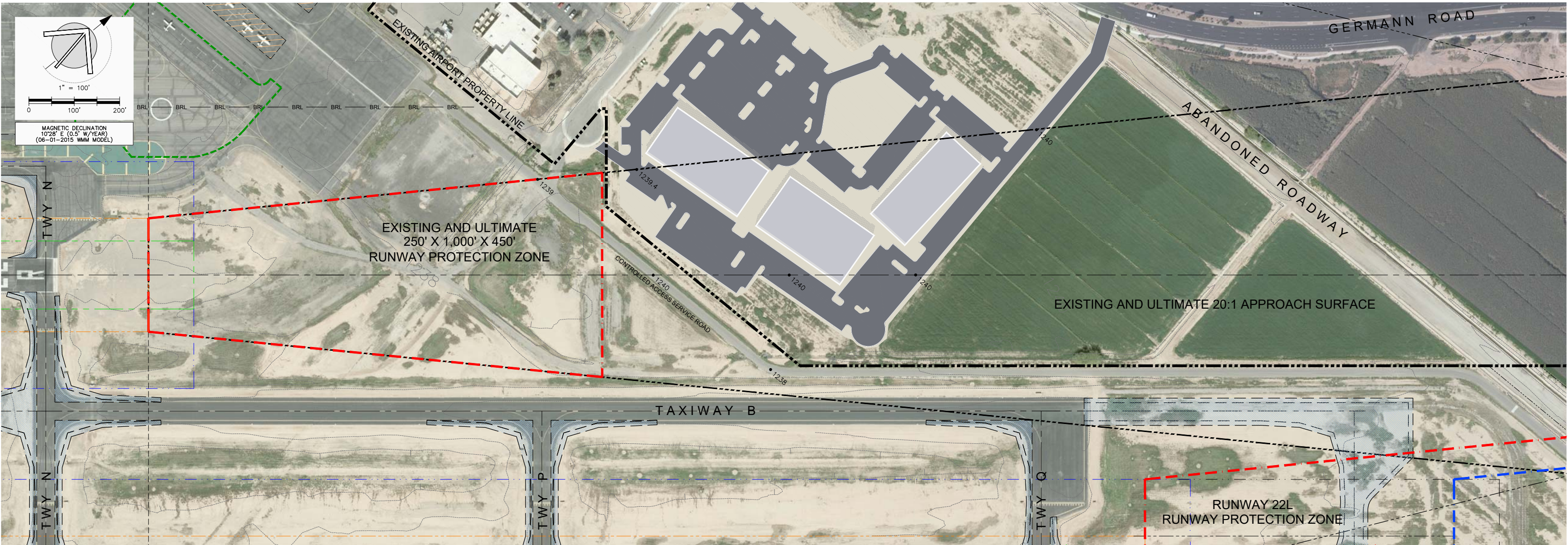
nicholas j pela & associates
airport consultants
2930 East Northern Ave., Bldg A-100
Phoenix, Arizona 85028
(602) 349-9967
nicholas.pela@nicholaspela.com

△	REVISION DESCRIPTION	DATE

RUNWAY 4L INNER APPROACH SURFACE DRAWING
CHANDLER MUNICIPAL AIRPORT (CHD)
CHANDLER, ARIZONA

07/15/16
DRAFT

Planning:	NJP	Sheet No.	8
Drawn:	NJP	of	11
Checked:	NJP		
Date:	---		



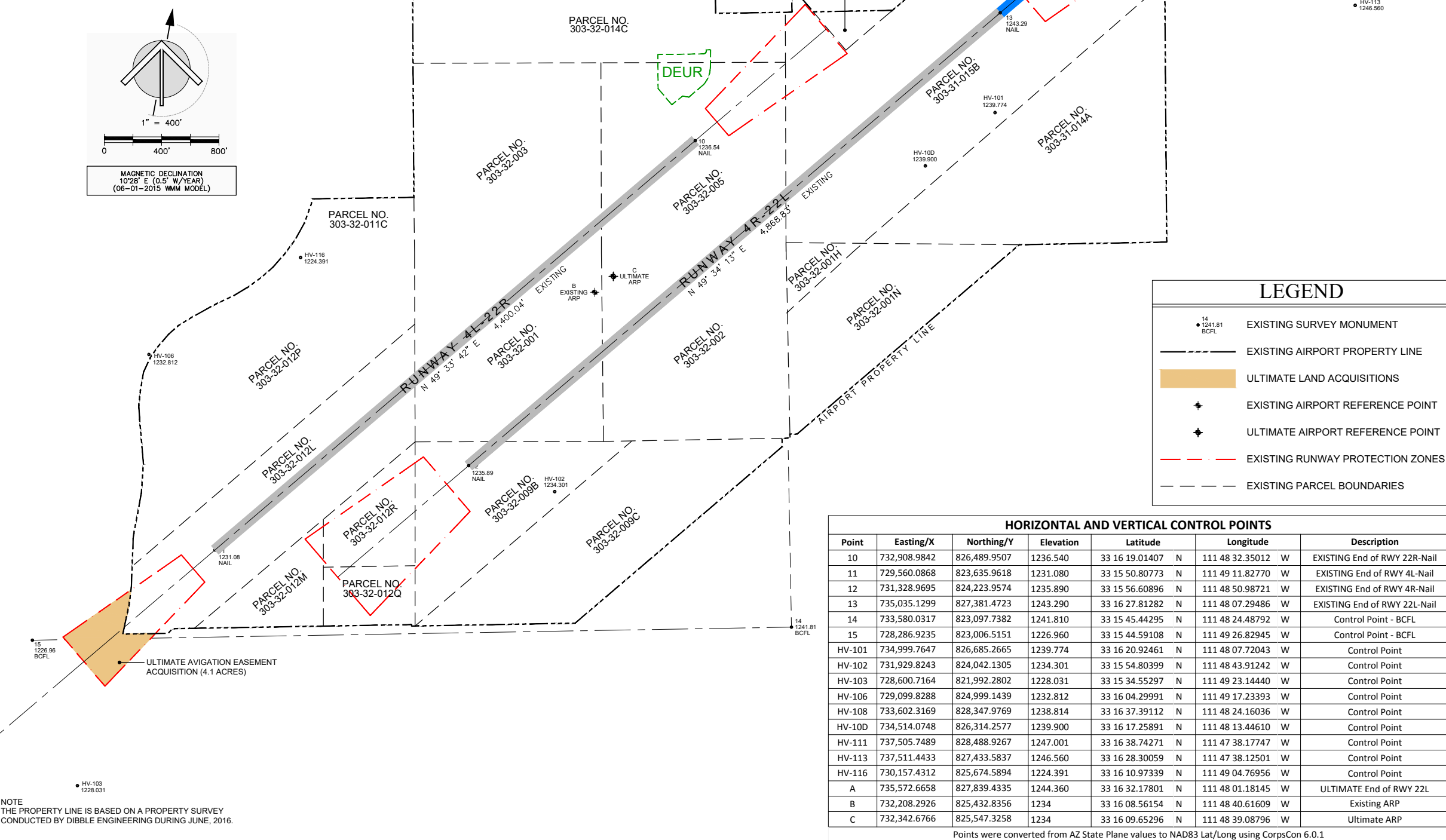
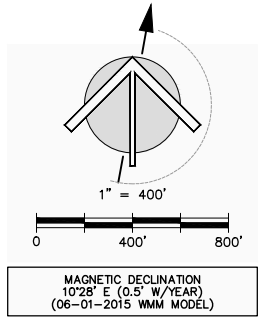
△	REVISION DESCRIPTION	DATE

DEED RECORDING INFORMATION

OWNER: PARCEL NO.	AREA (ACRES)	DEED DATE	RECORDING INFORMATION	GRANTOR / DEED TYPE	FAAP/ADAP/AIP NUMBER GRANT ACCEPTANCE
City of Chandler 303-32-001	40	5-28-1948	Deed #: NOD-44446 Book: 303 Map: 32 Parcel: 1	State of Arizona / Warranty	FAAP 9-02-008-6604 7-14-1959
City of Chandler 303-32-002	39	5-28-1948	Deed #: NOD-44447 Book: 303 Map: 32 Parcel: 2	State of Arizona / Warranty	FAAP 9-02-008-6604 7-14-1959
City of Chandler 303-32-003	38.96	5-28-1948	Deed #: NOD-44448 Book: 303 Map: 32 Parcel: 3	State of Arizona / Warranty	FAAP 9-02-008-6604 7-14-1959
City of Chandler 303-32-005	39	5-28-1948	Deed #: NOD-44445 Book: 303 Map: 32 Parcel: 5	State of Arizona / Warranty	FAAP 9-02-008-6604 7-14-1959
City of Chandler 303-32-009B	21.043	3-31-1988	Deed #: 880150742 Book: 303 Map: 32 Parcel: 009B	John Demetria LTD. / Warranty	AIP-3-04-0008-04 8-25-1987
City of Chandler 303-32-009C	35.702	1-26-1994	Deed #: 9400066751 Book: 303 Map: 009C Parcel: 009C	Airpark Associates LTD. Liability Company Warranty	AIP-3-04-0008-09 9-23-1993
City of Chandler 303-32-011C	6.625	10-24-1985	Deed #: 860101579 Book: 303 Map: 011C Parcel: 011C	Roosevelt Water Conservation District / Warranty	--
City of Chandler 303-32-012L	31.8	1-27-1975	Deed #: 11009-0175 Book: 303 Map: 012L Parcel: 012L	Roosevelt Water Conservation District / Warranty	AIP-3-04-0008-01 9-24-1984
City of Chandler 303-32-012M	7.83	9-6-1987	Deed #: 870499012 Book: 303 Map: 012M Parcel: 012M	Queen Creek Trust / Warranty	AIP-3-04-0008-03 9-26-1986
City of Chandler 303-32-012Q	6	12-31-1986	Deed #: 860733678 Book: 303 Map: 012Q Parcel: 012Q	D.J. Patterson / Warranty	AIP-3-04-0008-07 7-25-1991
City of Chandler 303-32-012R	8.914	12-31-1986	Deed #: 860733678 Book: 303 Map: 012R Parcel: 012R	D.J. Patterson / Warranty	ADAP-5-04-0008-02 9-30-1978
City of Chandler 303-32-012P	44.834	3-3-1986	Deed #: 860101579 Book: 303 Map: 012X Parcel: 012X	Roosevelt Water Conservation District / Warranty	AIP-3-04-0008-06 5-18-1989
City of Chandler 303-32-013J	24.65	5-29-2002	Deed #: 887110100 Book: 303 Map: 013J Parcel: 013J	AJ Chandler Air Park LLC / Warranty	AIP-3-04-0008-11 ADOT E1135 ADOT E1102 7-14-2000, 7-1-2000, and 4-2-2001
City of Chandler 303-32-013K	0.21	5-29-2002	Deed #: 887110100 Book: 303 Map: 013K Parcel: 013K	AJ Chandler Air Park LLC / Warranty	AIP-3-04-0008-11 ADOT E1135 ADOT E1102 7-14-2000, 7-1-2000, and 4-2-2001
City of Chandler 303-32-013L	0.71	5-29-2002	Deed #: 887110100 Book: 303 Map: 013L Parcel: 013L	AJ Chandler Air Park LLC / Warranty	AIP-3-04-0008-11 ADOT E1135 ADOT E1102 7-14-2000, 7-1-2000, and 4-2-2001
City of Chandler 303-32-013M	0.43	5-29-2002	Deed #: 887110100 Book: 303 Map: 013M Parcel: 013M	AJ Chandler Air Park LLC / Warranty	AIP-3-04-0008-11 ADOT E1135 ADOT E1102 7-14-2000, 7-1-2000, and 4-2-2001
City of Chandler 303-32-013N	2.11	5-29-2002	Deed #: 887110100 Book: 303 Map: 013N Parcel: 013N	AJ Chandler Air Park LLC / Warranty	AIP-3-04-0008-11 ADOT E1135 ADOT E1102 7-14-2000, 7-1-2000, and 4-2-2001
City of Chandler 303-32-014C	19.536	1-4-1993	Deed #: 930000184 Book: 303 Map: 014C Parcel: 014C	D.W. Patterson / Warranty	AIP-3-04-0008-06 5-18-1989
City of Chandler 303-31-001R	1.464	11-2-87	Deed #: 870666054 Book: 303 Map: 001H Parcel: 001H	Spilner / Warranty	AIP-3-04-0008-03 9-25-1986
City of Chandler 303-31-001N	22.076	9-12-1994	Deed #: 940672607 Book: 303 Map: 001N Parcel: 001N	R & E Farms / Special Warranty Deed	AIP-3-04-0008-08 6-25-1992
City of Chandler 303-31-009F	6.971	6-10-1988	Deed #: 880282164 Book: 303 Map: 009F Parcel: 009F	Chandler Airpark Limited Partnership / Warranty	AIP-3-04-0008-04 8-25-1987
City of Chandler 303-31-013C	1.72	1-4-1993	Deed #: 930000185 Book: 303 Map: 013C Parcel: 013C	C. Max Killian / Special Warranty Deed	AIP-3-04-0008-06 5-18-1989
City of Chandler 303-31-014A	46.589	6-11-1993	Deed #: 930370306 Book: 303 Map: 014C Parcel: 014C	D.W. Patterson / Special Warranty Deed	AIP-3-04-0008-08 6-25-1992
City of Chandler 303-31-015B	70	9-2-1988	Deed #: 880437911 Book: 303 Map: 015B Parcel: 015B	D.W. Patterson / Warranty	AIP-3-04-0008-08 8-25-1987 and 6-23-1988
City of Chandler 303-31-015D	3	8-31-1990	Deed #: 900394579 Book: 303 Map: 015D Parcel: 015D	D.W. Patterson / Warranty	AIP-3-04-0008-06 5-18-1989
City of Chandler 303-31-015E	6.728	8-31-1990	Deed #: 900394580 Book: 303 Map: 015E Parcel: 015E	D.W. Patterson / Warranty	AIP-3-04-0008-06 5-18-1989
City of Chandler 303-30-002B	2.416	7-7-1988	Deed #: 880330730 Book: 303 Map: 002B Parcel: 002B	Exeter Real Estate Investors / Warranty	AIP-3-04-0008-04 8-25-1987
City of Chandler 303-30-007B	4.16	7-22-1988	Deed #: 880360384 Book: 303 Map: 007B Parcel: 007B	D.W. Patterson / Warranty	AIP-3-04-0008-106 6-23-1988
Total Acreage	532.478	Note: The total acreage shown in this table is the cumulative sum of the above described parcels, whose acreages were obtained from legal descriptions and other legal documents obtained through the title search, referred to in the "Notice" block.			

DEUR (DECLARATION OF ENVIRONMENTAL USE RESTRICTION) NON EXCAVATION AREA LEGAL DESCRIPTION

COMMENCING AT THE SOUTHWEST CORNER OF THE NORTHWEST QUARTER OF THE NORTHEAST QUARTER OF SECTION 11, TOWNSHIP 2 SOUTH, RANGE 5 EAST OF THE GILA AND SALT RIVER BASE AND MERIDIAN, MARICOPA COUNTY, ARIZONA. (A FOUND BRASS CAP IN A HAND HOLE AT THE INTERSECTION OF AIRPORT BOULEVARD AND RYAN ROAD);
 THENCE NORTH 89°17'17" EAST, ALONG THE SOUTH LINE OF SAID NORTHWEST QUARTER, A DISTANCE OF 2071.22 FEET;
 THENCE SOUTH 00°25'04" WEST, A DISTANCE OF 2.91 FEET TO THE TRUE POINT OF BEGINNING;
 THENCE SOUTH 01°08'22" WEST, A DISTANCE OF 124.61 FEET TO THE BEGINNING OF A CURVE CONCAVE TO THE NORTHWEST, WITH A RADIUS OF 180.79 FEET BEARING NORTH 88°51'38" WEST;
 THENCE ALONG THE ARC OF SAID CURVE TO THE SOUTHWEST, THROUGH A DELTA ANGLE OF 41°01'18", A DISTANCE OF 129.44 FEET;
 THENCE SOUTH 49°41'12" WEST, A DISTANCE OF 135.75 FEET;
 THENCE NORTH 79°41'51" WEST, A DISTANCE OF 43.00 FEET;
 THENCE SOUTH 51°34'54" WEST, A DISTANCE OF 97.12 FEET;
 THENCE NORTH 40°12'47" WEST, A DISTANCE OF 147.66 FEET;
 THENCE NORTH 00°22'29" WEST, A DISTANCE OF 237.54 FEET;
 THENCE NORTH 89°17'17" EAST, A DISTANCE OF 319.66 FEET TO THE BEGINNING OF A CURVE, CONCAVE TO THE NORTHWEST, WITH A RADIUS OF 20.74 FEET BEARING NORTH 00°42'43" WEST;
 THENCE ALONG THE ARC OF SAID CURVE TO THE NORTHEAST, THROUGH A DELTA ANGLE OF 90°00'00", A DISTANCE OF 32.58 FEET;
 THENCE NORTH 00°42'43" WEST, A DISTANCE OF 7.21 FEET;
 THENCE NORTH 89°17'17" EAST, A DISTANCE OF 28.01 FEET TO THE TRUE POINT OF BEGINNING;
 THE NO EXCAVATION AREA IS 2.320 ACRES, MORE OR LESS.



LEGEND

- EXISTING SURVEY MONUMENT
- EXISTING AIRPORT PROPERTY LINE
- ULTIMATE LAND ACQUISITIONS
- EXISTING AIRPORT REFERENCE POINT
- ULTIMATE AIRPORT REFERENCE POINT
- EXISTING RUNWAY PROTECTION ZONES
- EXISTING PARCEL BOUNDARIES

HORIZONTAL AND VERTICAL CONTROL POINTS

Point	Easting/X	Northing/Y	Elevation	Latitude	Longitude	Description
10	732,908.9842	826,489.9507	1236.540	33 16 19.01407 N	111 48 32.35012 W	EXISTING End of RWY 22R-Nail
11	729,560.0868	823,635.9618	1231.080	33 15 50.80773 N	111 49 11.82770 W	EXISTING End of RWY 4L-Nail
12	731,328.9695	824,223.9574	1235.890	33 15 56.60896 N	111 48 50.98721 W	EXISTING End of RWY 4R-Nail
13	735,035.1299	827,381.4723	1243.290	33 16 27.81282 N	111 48 07.29486 W	EXISTING End of RWY 22L-Nail
14	733,580.0317	823,097.7382	1241.810	33 15 45.44295 N	111 48 24.48792 W	Control Point - BCFL
15	728,286.9235	823,006.5151	1226.960	33 15 44.59108 N	111 49 26.82945 W	Control Point - BCFL
HV-101	734,999.7647	826,685.2665	1239.774	33 16 20.92461 N	111 48 07.72043 W	Control Point
HV-102	731,929.8243	824,042.1305	1234.301	33 15 54.80399 N	111 48 43.91242 W	Control Point
HV-103	728,600.7164	821,992.2802	1228.031	33 15 34.55297 N	111 49 23.14440 W	Control Point
HV-106	729,099.8288	824,999.1439	1232.812	33 16 04.29991 N	111 49 17.23393 W	Control Point
HV-108	733,602.3169	828,347.9769	1238.814	33 16 37.39112 N	111 48 24.16036 W	Control Point
HV-10D	734,514.0748	826,314.2577	1239.900	33 16 17.25891 N	111 48 13.44610 W	Control Point
HV-111	737,505.7489	828,488.9267	1247.001	33 16 38.74271 N	111 47 38.17747 W	Control Point
HV-113	737,511.4433	827,433.5837	1246.560	33 16 28.30059 N	111 47 38.12501 W	Control Point
HV-116	730,157.4312	825,674.5894	1224.391	33 16 10.97339 N	111 49 04.76956 W	Control Point
A	735,572.6658	827,839.4335	1244.360	33 16 32.17801 N	111 48 01.18145 W	ULTIMATE End of RWY 22L
B	732,208.2926	825,432.8356	1234	33 16 08.56154 N	111 48 40.61609 W	Existing ARP
C	732,342.6766	825,547.3258	1234	33 16 09.65296 N	111 48 39.08796 W	Ultimate ARP

Points were converted from AZ State Plane values to NAD83 Lat/Long using CorpsCon 6.0.1

NOTE: THE PROPERTY LINE IS BASED ON A PROPERTY SURVEY CONDUCTED BY DIBBLE ENGINEERING DURING JUNE, 2016.

CHANDLER MUNICIPAL AIRPORT (CHD)
Chandler, Arizona

nicholas j. pela & associates
airport consultants

2930 East Northern Ave., Bldg A-100
Phoenix, Arizona 85028
(602) 349-9967
nicholas.pela@nicholaspela.com

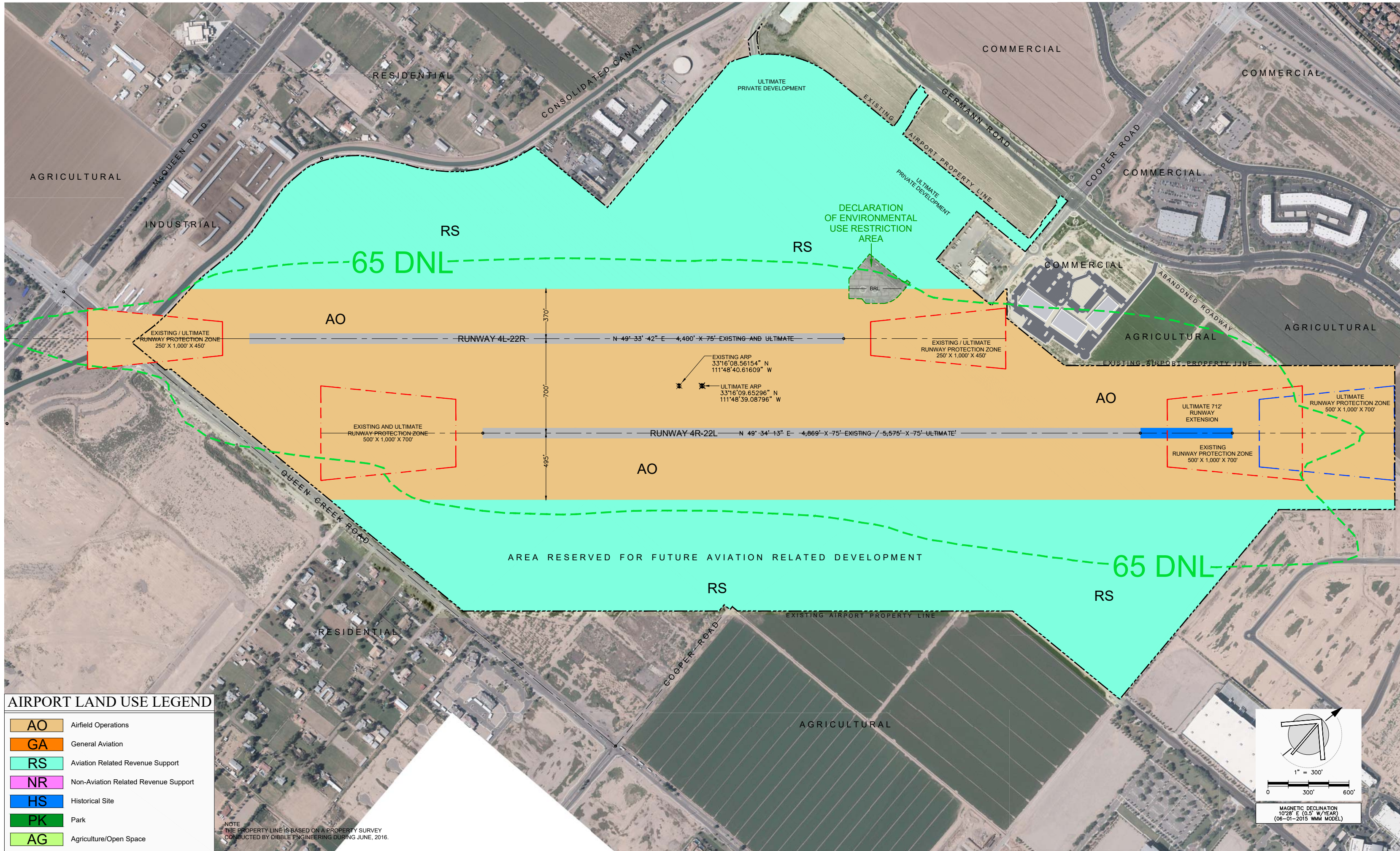
REVISION DESCRIPTION	DATE

AIRPORT PROPERTY MAP

CHANDLER MUNICIPAL AIRPORT (CHD) CHANDLER, ARIZONA

07/15/16
DRAFT

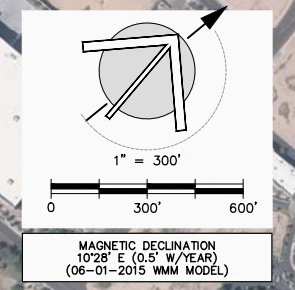
Planning: NJP	Sheet No. 10 of 11
Drawn: NJP	
Checked: NJP	
Date: - - -	



AIRPORT LAND USE LEGEND

- AO** Airfield Operations
- GA** General Aviation
- RS** Aviation Related Revenue Support
- NR** Non-Aviation Related Revenue Support
- HS** Historical Site
- PK** Park
- AG** Agriculture/Open Space

NOTE
THE PROPERTY LINE IS BASED ON A PROPERTY SURVEY
CONDUCTED BY DIBBLE ENGINEERING DURING JUNE, 2016.



CHANDLER MUNICIPAL AIRPORT (CHD)
Chandler, Arizona

nicholas j p e l a & a s s o c i a t e s
airport consultants

2930 East Northern Ave., Bldg A-100
Phoenix, Arizona 85028
(602) 349-9967
nicholas.pela@nicholaspela.com

△	REVISION DESCRIPTION	DATE

LAND USE DRAWING
CHANDLER MUNICIPAL AIRPORT (CHD)
CHANDLER, ARIZONA

07/15/16
DRAFT

Planning:	NJP	Sheet No.	11
Drawn:	NJP		
Checked:	RT		
Date:	---		of 11